

CONDOR HP

Parking Lot and Area Light



Applications: Parking lots, general area lighting, sporting facilities, roadway, car dealerships

PERFORMANCE SUMMARY

The Condor family was designed to provide maximum illumination in the target area for the lowest possible price. With a long life, it will not only save you money up front but also on maintenance costs for years to come.

Every Condor area product can be fitted with multiple brackets and arms making an effortless one step installation in any application

Features

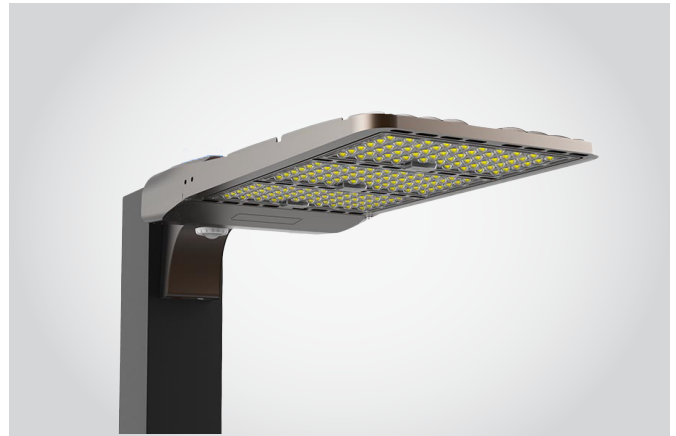
- Available with 9 lumen packages in 6 different distributions
- High output 140lm/W operating efficiency
- Designed to achieve uniformity of light keeping consistent 4Fc over 1600sqft area
- Aerodynamic shape and slimline design reduce wind drag making it suitable for installation in harsh conditions
- Multiple mounting options including square/round pole, slipfitter, bracket and wall mount enabling seamless retrofit applications
- DLC Premium 4.3 qualified product
- Premium driver featuring optional 0-10v dimming and 10kV surge protection
- Patented cooling fin provides excellent thermal dissipation for extremely long operational hours

Specification

Volts: AC100-277V
 Surge: Line to gnd-10kV
 Average Rated Life: 50,000hrs
 CRI: RA80
 PF: 0.95 THD: <15%
 Environment Location: IP65
 Impact Rating: IK08
 Ambient Temp: -40°F to 131°F

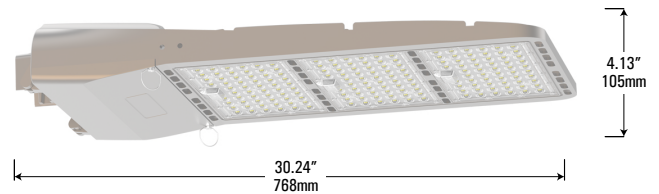
PRODUCT CODE

Example Condor HP cat. 60.57.3M+ES.WB.MS.BR

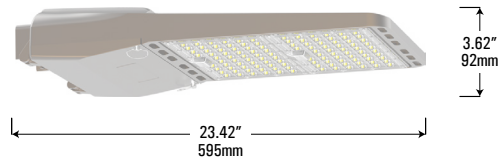


DIMENSIONS

400-500W



240-300W



60-185W









Model No	Wattage (W)	CCT (°K)	Distribution	Mounting	Options	Finish
Condor HP	60 - 60W/7,800 lms	3 - 3000	92 - 90°x120°	SL - 60mm Slipfitter	MS - Motion Sensor PE - Photocell 0 - None	BR - Bronze
	80 - 80W/11,200 lms	4 - 4000	2M - Type 2M	RP - Round Pole Bracket		BK - Black
	100 - 100W/14,000 lms	5 - 5000	3M - Type 3M	SP - Square Pole Bracket		G - Gray
	150 - 150W/21,000 lms	57 - 5700	3S - Type 3S	WB - Wall Bracket		
	185 - 185W/25,160 lms	65 - 6500	4M - Type 4M	AB - Adjustable Bracket		
	240 - 240W/28,800 lms		5M - Type 5M	PB - Pole Bracket		
	300 - 300W/41,400 lms		+ES - External Glare Shield			
	400 - 400W/56,000 lms					
	500 - 500W/68,000 lms					



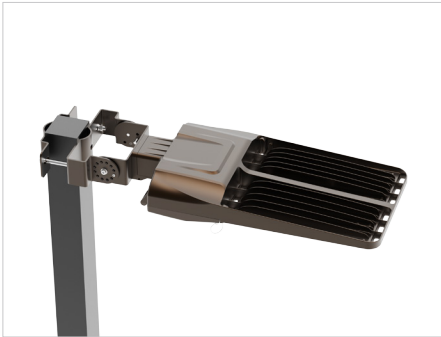
CONDOR HP

Parking Lot and Area Light

EPA SQ.FT

Configuration		60/80/100/150/185W	240/300W	400/500W
	1	0.23	0.42	0.58
	2x180°	0.46	0.84	1.16
	2x90°	0.30	0.55	0.75
	3x90°	0.53	0.96	1.33
	3x120°	0.46	0.84	1.16
	4x90°	0.53	0.96	1.33

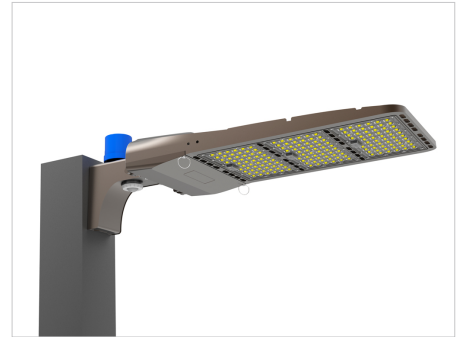
MOUNTING



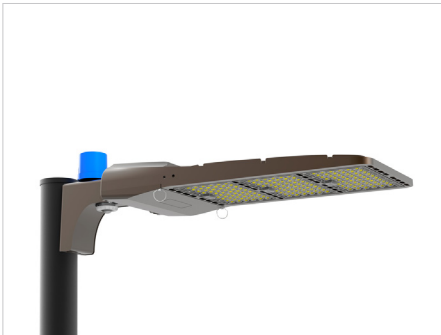
SP Pole Bracket



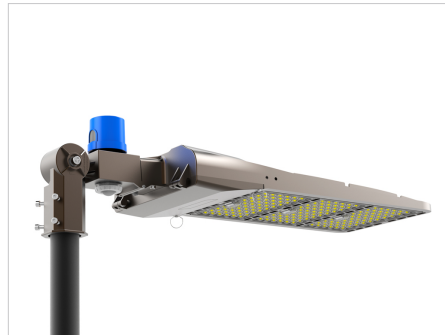
AB Adjustable Bracket



SB Square Pole Bracket



RP Round Pole Bracket

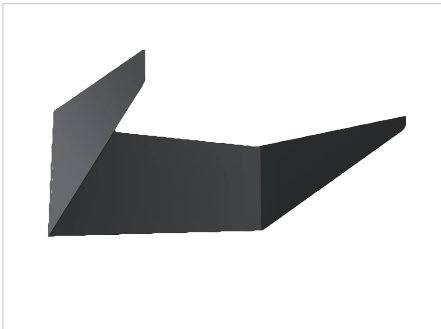


SL 60mm Slipfitter



WB Wall Bracket

EXTERNAL SHIELDS



ES External Glare Shield

