

GAIN THE ADVANTAGE



Tailored Design

Successful lighting begins with good design. These are the main factors to be considered in the design process:

Light Quantity

Quantity—Of light is expressed as a foot candela level and is usually determined by the level of activity adjacent to the facade. Other factors which affect the light levels are surface reflectance, area illuminated and municipality lighting zone

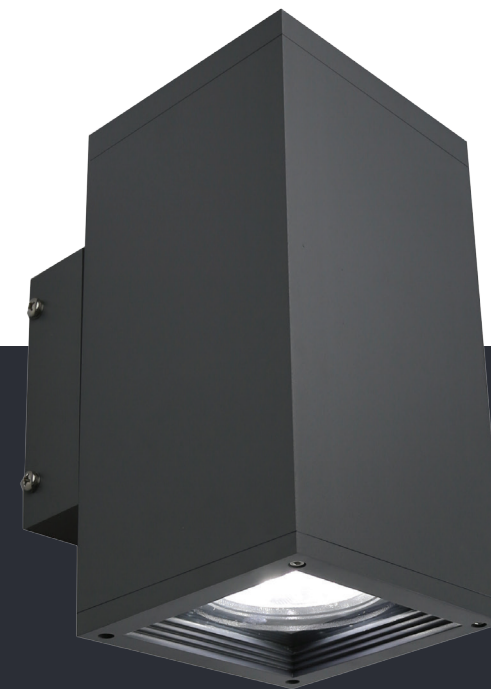
IESNA standards recommend the following average maintained foot candela levels for uniform illumination of a building facade with < 50% reflectance in a commercial municipal zone



Turn Any Building Into An Attraction

Planning Permission

Many local municipalities have stringent requirements to reduce obtrusive and unwanted light pollution from facade lighting. You may also need permission to illuminate the facade of your property



BLADE SERIES

Light Quality

Quality—Of light is evaluated by the degree of light uniformity and lack of glare. Optimum uniformity is achieved by using light fittings that provide the correct light distribution and that are positioned appropriately around the perimeter of the building. Glare is kept to a minimum by utilising light fittings with precise cut-off distribution.

For optimum design, a luminaire has to offer more than reliability, performance and value. It must also become part of its surroundings, deliver minimal environmental impact and be energy efficient.

Sunled Industries can provide a complete facade and building perimeter lighting solution, including design, fittings and installation. Our experienced staff includes qualified lighting designers and industry experts that can guide you through the process from start to finish.



LINEO SERIES



ECLIPSE

The Right Type Of Light

High Quality
High Performance
Low Glare



Sunled Industries provides economical exterior, industrial and commercial lighting solutions using the latest high performance LED lighting technologies and practical design strategies



LED: An Advanced Solution

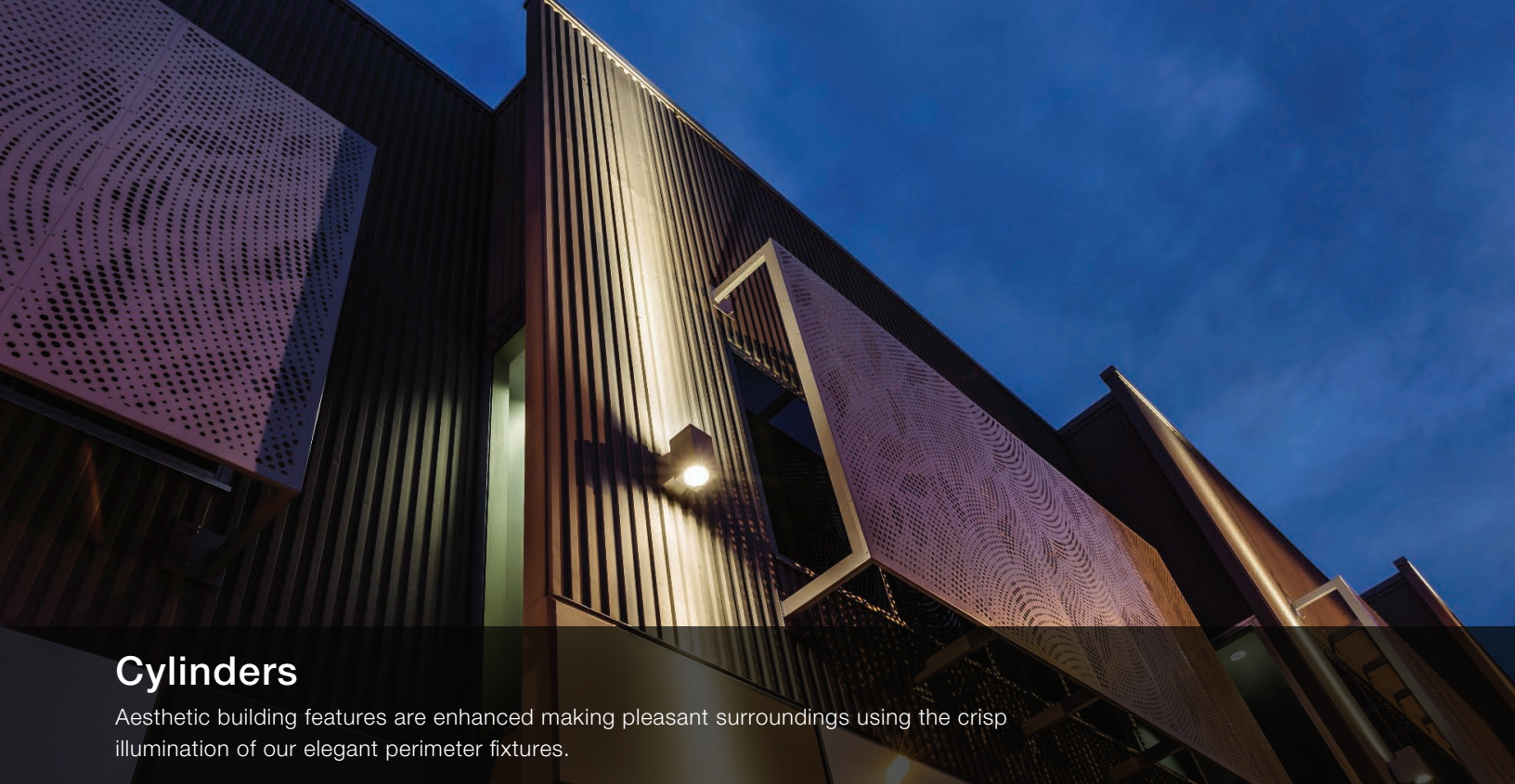
For either residential or commercial use, installing or upgrading to an LED lighting solution from Sunled Industries can provide a number of benefits compared to traditional lighting, including:

- Lower energy consumption
- Greater optical control
- Near-zero maintenance
- Improved uniformity
- Instant light (no warm-up or re-strike time)
- Longer lifetime

Our variety of models can be tailored to any budget and applications. All our products are backed by a minimum 5-7 years warranty

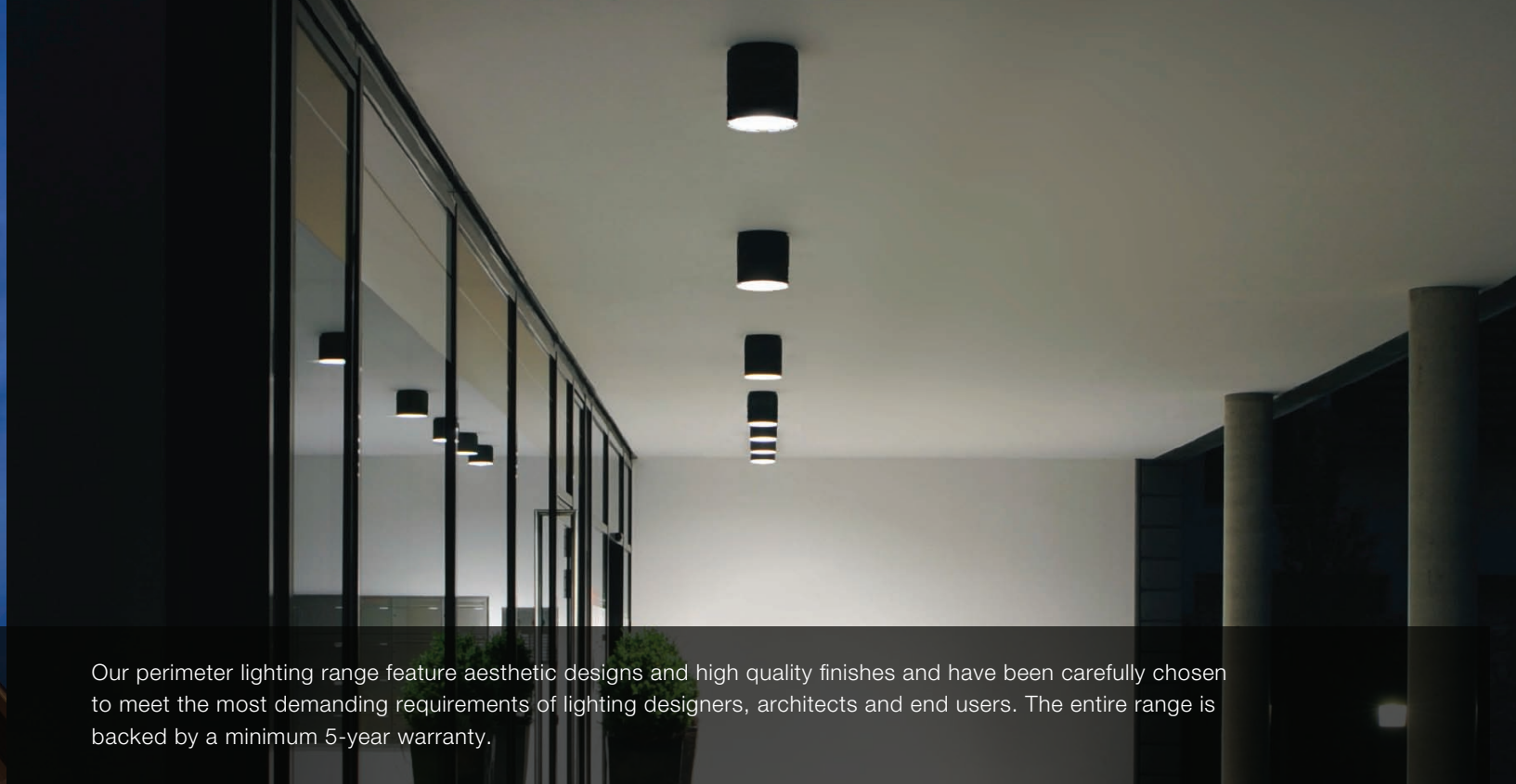
Whether it be replacing existing lighting or design and installation of a complete tailored solution, Sunled Industries can help





Cylinders

Aesthetic building features are enhanced making pleasant surroundings using the crisp illumination of our elegant perimeter fixtures.



Our perimeter lighting range feature aesthetic designs and high quality finishes and have been carefully chosen to meet the most demanding requirements of lighting designers, architects and end users. The entire range is backed by a minimum 5-year warranty.



Pillar Square

Bold And Aesthetic

- Ceiling or pendant mounting options
- Available in 3 body sizes; small, medium and large
- 4-40W
- 8°/15°/25°/38°/45°/60° distributions
- Swivel canopy attachment for sloped ceilings
- IP65

Blade Facade

Fully Customisable

The Blade Outdoor LED Facade Fitting is specifically conceived to illuminate facades and highlight architectural elements. It's compact and minimal profile is designed to place emphasis on the building and not the fitting itself.

- One or double-sided illumination in up to 4200Lm each side
- IP65
- 15°/25°/38°/45°/60° distributions
- Available in marine ambient corrosion resistant for seaside areas
- Different body sizes for building, facade or general perimeter illumination applications
- 240V or 24V DC RGB DMX colour changing option
- 20° angled tilt bracket



Blade Square

Architecturally Appealing

- One or double-sided illumination in up to 4200Lm each side
- Available in 3 body sizes; small, medium and large
- IP65
- 15°/25°/38°/45°/60° distributions
- Clean simple lines



Slate

- T3 or T4 distribution options
- IP65
- Dark sky friendly (uplight model)
- One or double-sided illumination in up to 2000Lm each side



Pillar

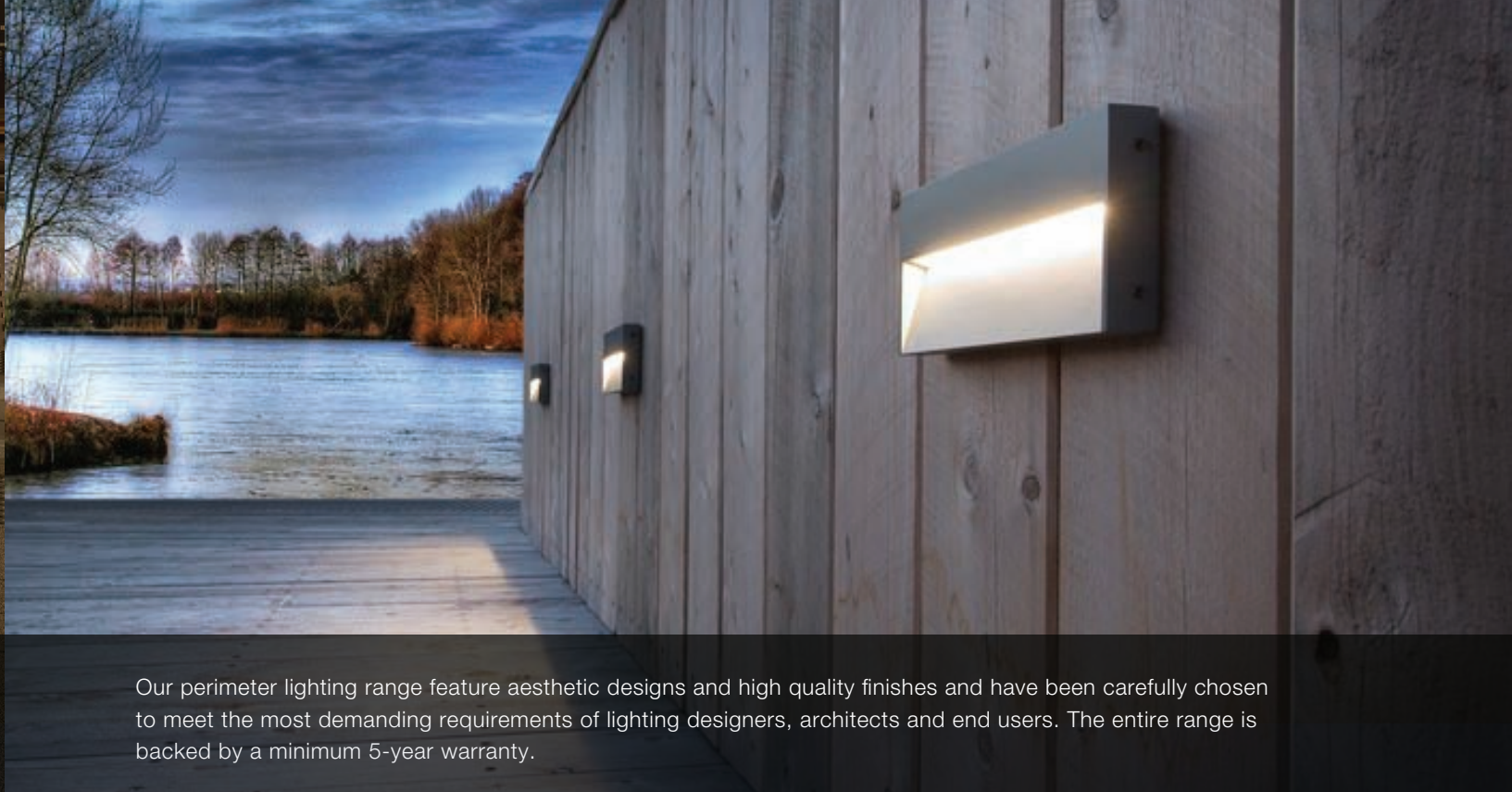
Classic Round Design

- 4-40W
- 8°/15°/25°/38°/45°/60° distributions
- RGB colour mixing option
- IP65
- Available in marine ambient corrosion resistant for seaside areas
- Ceiling or pendant mounting options
- Swivel canopy attachment for sloped ceilings



Perimeter

Aesthetic building features are enhanced making pleasant surroundings using the crisp illumination of our elegant perimeter fixtures.

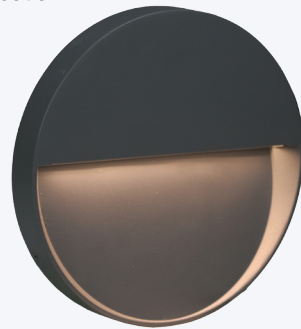


Our perimeter lighting range feature aesthetic designs and high quality finishes and have been carefully chosen to meet the most demanding requirements of lighting designers, architects and end users. The entire range is backed by a minimum 5-year warranty.

Eclipse

Distinct Circular Profile

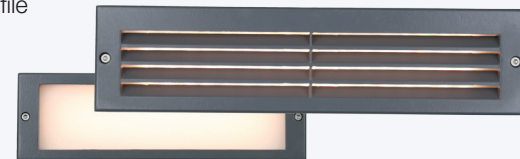
- Quick and easy installation, without the requirement for recess in structure
- Wide beam asymmetric distribution
- 12 or 15W
- IP65
- AC120V or DC24V



Shutter

Glare Free Illumination

- Glare free illumination using louver shielded lens
- Asymmetric and symmetric distributions available
- 6-20W
- IP65
- 7" to 20" profile

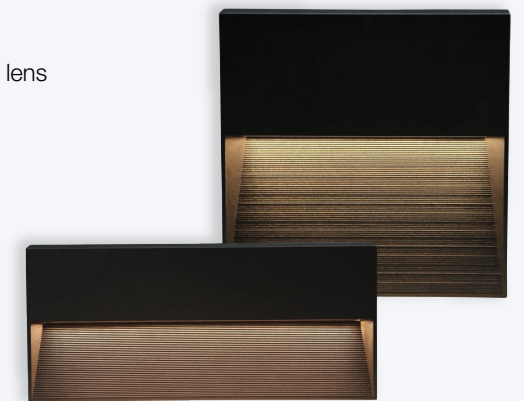


Torrent

Quick And Easy Installation

The Torrent LED is a surface wall mount luminaire, perfect for accentuating walkways, stairs and retaining walls. It features a smooth transparent PMMA lens cover for easy cleaning and is simple to install

- Mod/A or Mod/B variations in both rectangle and square profiles
- Optional stepped or smooth baffle design
- 12 or 15W
- Wide beam asymmetric distribution
- IP65 high ingress protection PC lens
- Quick and easy surface mount installation without any structure recess



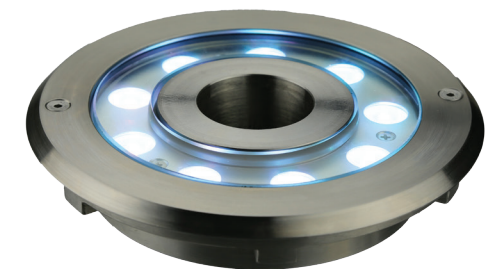
Submariner

Underwater Expert

The Submariner Submersible LED Uplight is a robust, elegant luminaire offering IP68 high ingress protection for marine lighting applications. Available in a variety of beam angles and capable of being submerged in depths of up to 5m

- 20 or 32W
- IP68
- Fully submersible to 20ft depth
- Remote driver option
- High impact protection tempered glass lens
- 5°/15°/25°/45°/60° distributions
- AC240V or DC24V

20ft
IP68



Stream

- Linear 12.4"W and rectangular 9.0"W sizes
- AC120V or DC24V
- Optional stepped or smooth baffle design
- Wide beam asymmetric distribution
- IP65 PC lens
- 8-16W

Facade

The facade can often be the most important visual aspect of the building exterior and matching it with the correct fixture is crucial.

With a multitude of options for each fixture providing a variety of light levels, color mixing and beam angles, Sunled has the solution to create the perfect lighting design for any facade.

Lineo

Slim and Versatile

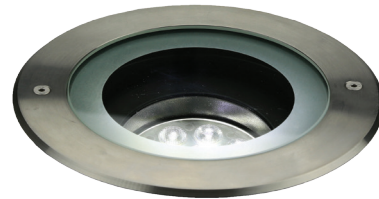
- 16-58W
- IP65
- 5°/15°/25°/45°/60° distributions
- Silkscreen printed tempered glass lens
- Side and end mounting bracket capability
- Available in 20° tilt aperture, H40°xV15° or H60°xV10° for precise application matching



Caspian

Durable Shatterproof Body

- Thermal shock resistant glass lens cover rated to 4,400lbs/20mph
- High impact protection rating (IK10) protects from impact and acts of vandalism
- Elegant 304 or 316 marine grade stainless steel trim
- Glare reducing baffle attachment with manual tilt lens
- 5°/15°/25°/45°/60°/H50°xV10°/H60°xV10° distributions
- RGBW DMX compatible colour mixing option
- Available with antislip lens and a multitude of sizes
- 7-44W in 5 to 11" aperture sizes



Spiros

- 18/24W
- IP67/500kg static load rating
- 5°/15°/25°/45°/60° distributions
- 15° manual tilt lens option
- Available in marine ambient corrosion resistant for seaside areas



Accenture

Ultimate In Flexibility

- 9-40W
- Small, medium and large body sizes available
- 5°/15°/25°/45°/60° distributions
- Custom adjustable stem arm bracket full ultimate light control
- Multitude of mounting and lens accessories
- Ground, building or stem mount
- AC120V or DC24V



Prezio

Elegant And Powerful

The Sunled Prezio Precision floodlight is a lighting solution that offers flexibility and high-performance lighting.

An adjustable bracket allows for a complete 180° rotation of Prezio, makes it perfect for decorating outdoor environments such as entrances of shops, architectural attractions and building facades

- 6-46W
- Available in 3 sizes; small medium and large
- 180° rotatable adjustable mounting bracket
- Ground, wall or long arm mount
- Round or elegant trapezoid mounting base
- 15°/30°/45°/H55°xV20°/H20°xV55° distributions
- Ultra low profile design starting at 4"Wx5"D



Sparrow

Architectural Floodlight

- 75-150W
- 10°/25°/50°/65°/96° distributions
- Yoke or floor standing pedestal mount
- IP65
- Available in marine ambient corrosion resistant for seaside areas
- Visor housing addon
- Dimmable





Sunled Industries LLC

100 Duffy Ave, Ste 510
Hicksville NY 11801
UNITED STATES

+1 (917) 563 7078

info@sunledind.com

www.sunledind.com

Complete Product Range | www.sunledind.com

Visit our website for more details on any of our products including specification sheets, photometric files and more

TEC-MAR®