

## 2019 LED PRODUCT GUIDE





# TEC-MAR®

## HIGH LIGHTING PERFORMANCE

Sunled Industries is pleased to present our range of TEC-MAR high performance lighting solutions. Made In Italy and sourced from the industry leading lighting manufacturer TEC-MAR, these products feature high quality Italian design and have been carefully chosen to meet the most demanding requirements of lighting designers, architects and end users. The entire range is backed by a minimum 5 or 7 year warranty

We are proud to be the exclusive US distributor of the TEC-MAR brand, which has been making high performance lighting products for over 25 years and exports to 30 countries worldwide. Covering both interior and exterior our TEC-MAR range includes street lights, highbays, facade fixture floodlights and more.

## CONTENTS

Product Overview	Page 1-2
Industrial & Canopy	Page 3
Roadway	Page 4
Commercial	Page 5
LED Flood	Page 6

Our unique manufacturer relationship allows us to supply the TEC-MAR product at surprisingly competitive prices with an comparable \$/lumen output to any product on the market. As a result further to efficiency benefits of LED technology, we are able to offer savings on capital investment, significantly reducing the payback period in a premium product line.

*made in Italy*





# TEC-MAR<sup>®</sup>

## COST EFFICIENCY SOLUTIONS

### INDUSTRY LEADING \$ PER LUMEN

TEC-MAR products operate using less power than conventional LEDs meaning financial savings in both operation and maintenance, drastically reducing the payback period

### COMPETITIVE PRICING

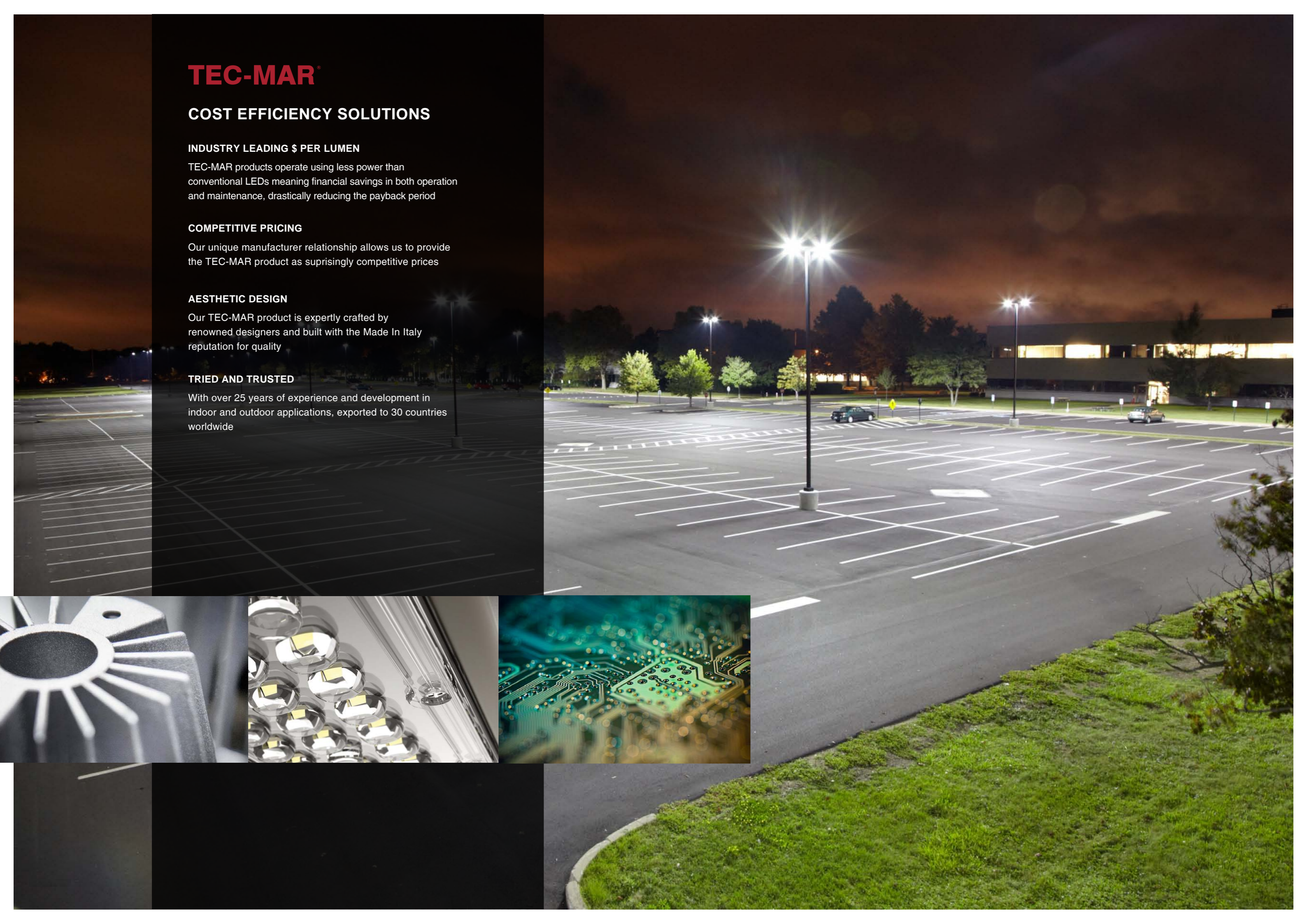
Our unique manufacturer relationship allows us to provide the TEC-MAR product as suprisingly competitive prices

### AESTHETIC DESIGN

Our TEC-MAR product is expertly crafted by renowned designers and built with the Made In Italy reputation for quality

### TRIED AND TRUSTED

With over 25 years of experience and development in indoor and outdoor applications, exported to 30 countries worldwide





## INDUSTRIAL & CANOPY

The state of the art LED technology in the Industrial TEC-MAR range, allows for suitability in numerous applications. Differing ceiling heights require variable lighting concepts in order to achieve the optimum lighting. TEC-MAR offers a large product portfolio of LED Industrial lighting with limitless possibilities. Integral lighting control also further increased operating efficiency



### ORION

- 80-150W
- Up to 25,000 lumens output
- IP65
- Tempered or prismatic PC diffuser
- **160lm/W luminous efficiency**
- L80 150,000hrs
- IK08



### PRINCE SERIES

- 120-200W
- Up to 30,500 lumens output
- IP65
- 30°/45°/90° distributions
- **150lm/W luminous efficiency**
- L70 130,000hrs
- IK08



### DANTE SERIES

- 50-145W
- Up to 19,000 lumens output
- IP65
- Recess and surface mount option
- **130lm/W luminous efficiency**
- L80 150,000hrs
- IK08

### ARGO SERIES

- 55-120W
- Up to 16,060 lumens output
- IP65
- Replacable LED module system
- 130lm/W luminous efficiency
- L80 150,000hrs
- IK08



### LORD 4 SERIES

- 150-280W
- Up to 45,000 lumens output
- IP65
- 30°/45°/90°/110° distributions
- **160lm/W luminous efficiency**
- L70 130,000hrs
- IK08



### LORD SERIES

- 80-200W
- Up to 30,500 lumens output
- IP65
- 30°/45°/90°/110° distributions
- **150lm/W luminous efficiency**
- L70 130,000hrs
- IK08



### MODULO 2

- 18-60W
- Up to 9,500 lumen output
- Emergency and dimming options
- **160lm/W luminous efficiency**
- L80 90,000hrs
- IK07



### MASTER SERIES

More power and wider distribution distinguish the Master Series Highbay luminaire. The slim profile makes it possible to achieve sufficient mounting heights, even at low levels and with IP65 protection for suitability in almost any application

- **7 year factory backed warranty**
- High power in a modern slim profile
- All inclusive cooling fins in aluminium housing for long service life
- 30°/110° distributions
- Up to 30,000 lumen output
- 150lm/W luminous efficiency
- L70 140,000hrs



### SPIDER SERIES

- 150 or 230W
- Up to 34,000 lumens output
- Diffused aluminium reflector option
- IP65
- **150lm/W luminous efficiency**
- L70 140,000hrs
- IK08





## ROADWAY

### STEALTH SERIES

Designed from the bottom up as a totally optimised contemporary style LED street luminaire, the Stealth Series delivers incredible efficiency, without sacrificing application performance.

Incorporating industry-leading, patented optics, the Stealth LED luminaire features a choice of specialized optical distributions that deliver superior control and maximize light levels.

With a selection of 13 lumen packages in 3 distributions, the TEC-MAR Stealth Series allows scalability from 3,000 to over 22,000 delivered lumens

### PLANET SERIES

The Planet Series area and roadway light can be installed in several different applications, thanks to its changeable modular LED construction, making possible to equip the same luminaire in either symmetrical or asymmetrical distribution. The optional mounting kits allow a pole or bracket mount

With suitability for use in tunnels, large area mast-lighting and pathway lighting, the versatility and host of performance options of the Planet Series lighting ensures the right selection is made every time with scalability from 3,000 to over 23,100 at lamp lumens



**MOMODESIGN**

### STEALTH 2

- 90-160W
- Up to 22,500 lumens output
- IP66
- Range of distributions
- **140lm/W at lamp**
- L80 150,000hrs
- IK08



### STEALTH

- 16-80W
- Up to 11,000 lumens output
- IP66
- IK08
- 140lm/W at lamp
- **L80 150,000hrs**



### PLANET SERIES

- 20-100W
- Asymmetrical distribution
- Up to 14,100 lumens output
- IP66
- IK08
- **160lm/W at lamp**
- L70 130,000hrs



### MAXI PLANET

- 120-150W
- Asymmetrical distribution
- Up to 23,600 lumens output
- IP66
- IK08
- **160lm/W at lamp**
- L70 130,000hrs

## COMMERCIAL

The field of application of the TEC-MAR office range is very versatile and can be predominantly implemented in the commercial sector. With almost 25 years of experience in traditional fluorescent office lighting incorporated into LED development, tried and trusted elements have been redesigned retaining visual elements that enable TEC-MAR lighting to be harmoniously integrated into the commercial environment.



### CRETA LED

- 18-48W
- Up to 7,000 lumens
- 60° distribution
- **160lm/W at lamp**
- L70 140,000hrs



### DARK LED

- 15-48W
- Up to 7,000 lumens
- 60° distribution
- **160lm/W at lamp**
- L70 140,000hrs



### DIVINA

- 24-48W
- Up to 7,000 lumens
- Microprismatic lens
- **160lm/W at lamp**
- L70 140,000hrs



### TECLA

- 24-48W
- Up to 7,000 lumens
- Opal lens
- **160lm/W at lamp**
- L70 140,000hrs



### YAMA

- 37 or 46W
- Up to 8,000 lumens
- Indirect reflector
- **170lm/W at lamp**
- L70 140,000hrs



### DIANA

- 17-64W
- Up to 10,000 lumens
- 4 sizes available
- **160lm/W at lamp**
- L70 140,000hrs

### FORMA SERIES

Homogeneous and glare-free light distribution is the focus of the TEC-MAR Forma LED Series pendant luminaires. The superior light quality and high visual comfort makes the Forma LED Series the optimal choice in the field of visual workstations.

- Louvre, opal or microprismatic
- Direct and indirect distribution
- Up to 6700 lumens
- 35-40W
- Multiple mounting options
- Break free end to end joints
- L70 140,000hrs

### BLANCA

- 10-60W
- Up to 9,000 lumens output
- 4 sizes available
- Suspend or surface mount
- **150lm/W luminous efficiency**
- L70 130,000hrs



### LUNA LED

- 9-55W
- Up to 25,000 lumens output
- CRI > 85
- **160lm/W at lamp**
- L70 130,000hrs



### QUEEN SERIES

- 17-64W
- Up to 10,000 lumens
- 4 sizes available
- Opal or microprismatic
- **160lm/W at lamp**
- L70 140,000hrs



## LED FLOOD

### LORD SERIES

Designed for ultimate versatility, the Lord 4 Series industrial and commercial LED floodlight luminaire delivers precise optical control offering a choice of symmetrical and asymmetrical distributions at 80-280W

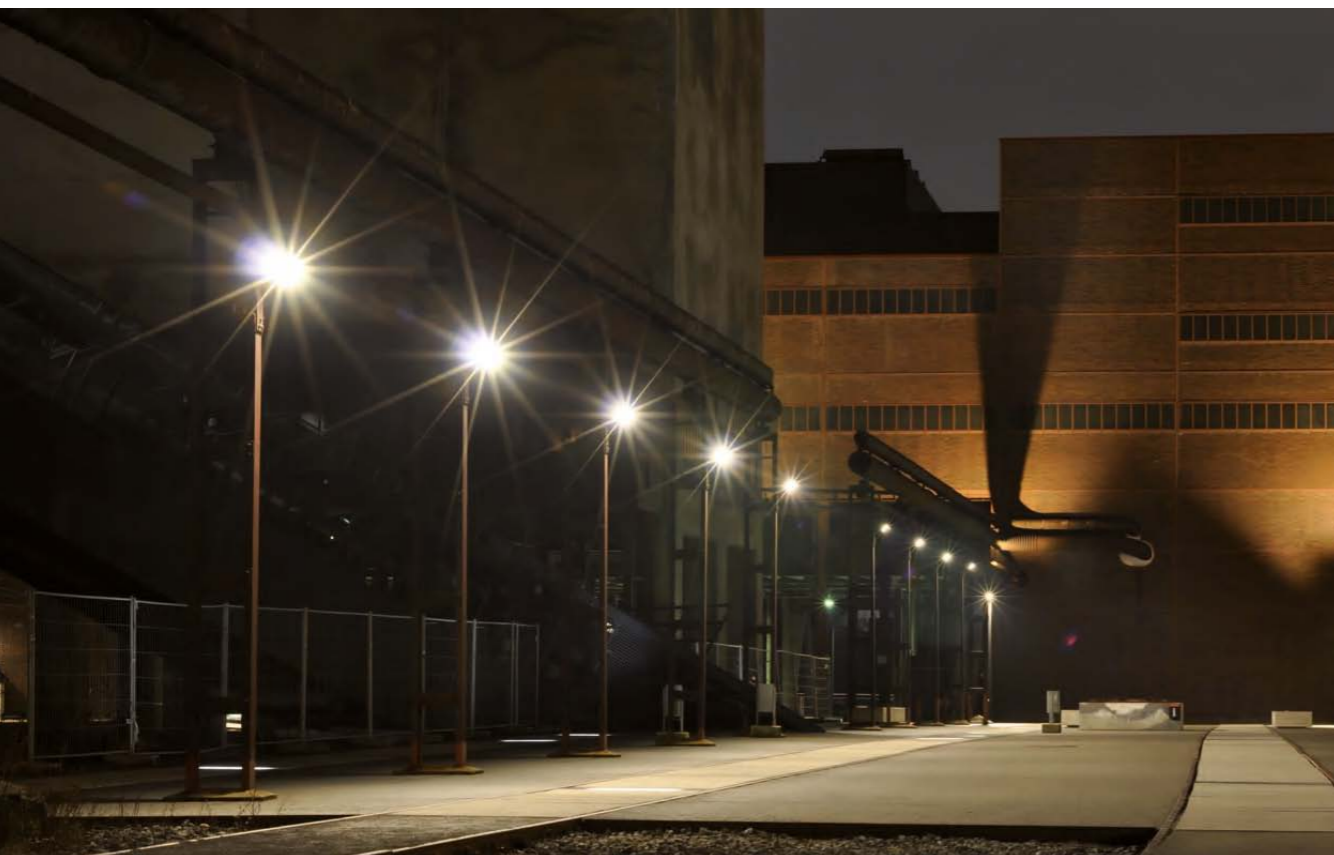
Its aluminium die-cast profile with black or grey proprietary powder coating makes the TEC-MAR Lord Series an eye catcher. Tool-free hinged housing as well as quick connect plugs ensures minimal installation and maintenance costs.

The Lord 4 Series is built tough with shock and temperature hardened glass and is fitted with an adjustable bracket for surface mount applications

### PRINCE SERIES

The PRINCE Series is developed for robustness and longevity of extra-long life product cycles. High impact resistance and a tight weather proof design the basis for its construction. Equipped with the latest generation of LED chips and driver, illumination has been optimised for up to 158lm/W measured at the fitting.

The TEC-MAR Prince Series are equipped with many features and technologies required for large area illumination



### MINI PRINCE FLOOD

- 55-150W
- Up to 25,000 lumens output
- IP65
- 30°/45°/90° distributions
- **160lm/W luminous efficiency**
- L70 130,000hrs
- IK08



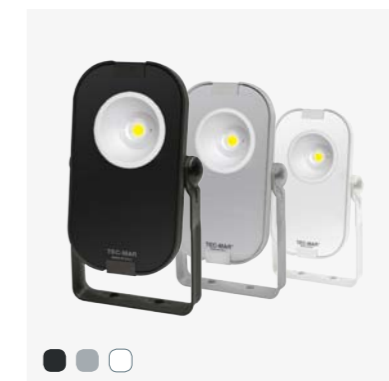
### PRINCE SERIES

- 120-200W
- Up to 30,500 lumens output
- IP65
- 30°/45°/90° distributions
- 150lm/W luminous efficiency
- L70 130,000hrs
- IK08



### LORD SERIES

- 80-200W
- Up to 30,500 lumens output
- IP65
- 30°/45°/90°/110° distributions
- **150lm/W luminous efficiency**
- L70 130,000hrs
- IK08



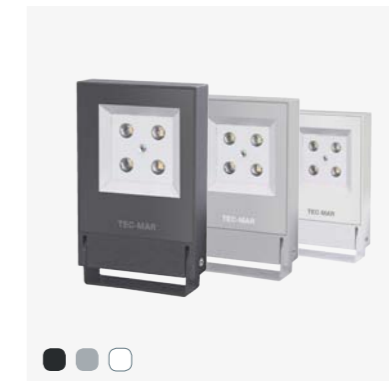
### LORDINO

- 20-65W
- Up to 8,100 lumens output
- IP66
- 30°/45°/90°/110°
- 150lm/W luminous efficiency
- L70 130,000hrs
- IK08



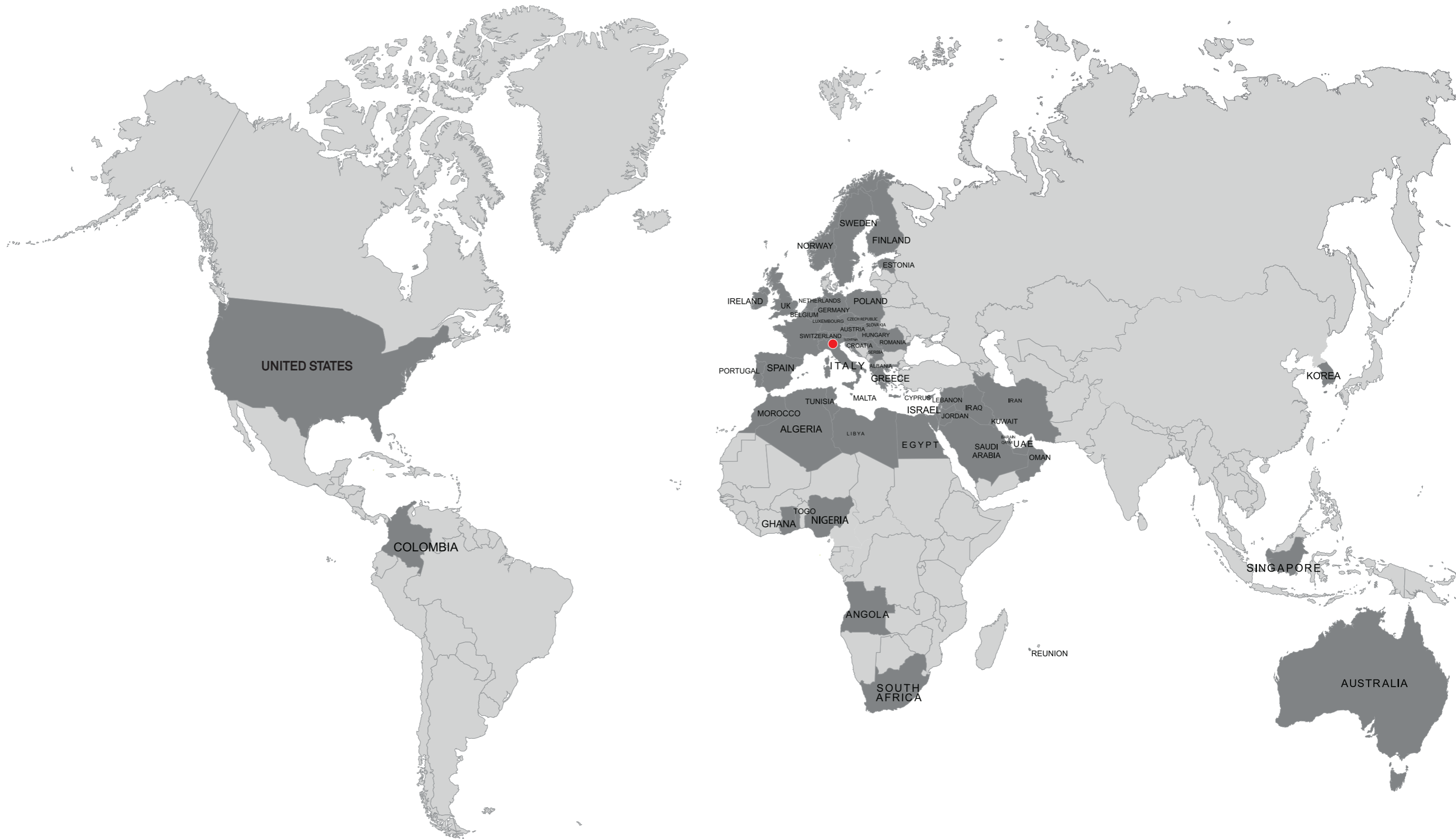
### LORD 4 SERIES

- 150-280W
- Up to 45,000 lumens output
- IP65
- 30°/45°/90°/110° distributions
- **160lm/W luminous efficiency**
- L70 130,000hrs
- IK08



### MICRO SERIES

- 15W
- 2,250 lumens
- IP66
- 30°/45°/90° distributions
- IK08







**SUNLED INDUSTRIES LLC**

142 10 Roosevelt Ave #112  
Flushing NY 11354, United States

Tel +1 (917) 563 7078

E [mail@sunledind.com](mailto:mail@sunledind.com)

W [www.sunledind.com](http://www.sunledind.com)

**[SUNLEDIND.COM](http://SUNLEDIND.COM) | Complete Product Range**

Visit our website for more details on any of the products featured in this guide, including specification sheets, photometric files and more

**TEC-MAR®**