

EXCALIBRE

Architectural LED Bollard



Applications: Corporate and government, education and healthcare, parks and pathway, urban environments

PERFORMANCE SUMMARY

Excalibre Series dome-top open and louvered bollards provide uniform illumination, superior spacing and solid vandal resistance. Rugged extruded cast aluminium construction and gasketed silicon seals ensure durability for years of reliable maintenance-free operation

For harsh environments and demanding areas, its roughneck base attachment is capable of withstanding shear loads of up to 10,000lbs. The Excalibre Series LED Bollard is stylish, versatile, with full cutoff optics that will meet the most stringent of lighting codes.

Optics

- High transmission clear polycarbonate or glass lens seals the luminaire's optical chamber to IP65
- Light engines consist of high-efficacy LumiLED 3030 LEDs mounted to metal-core circuit boards to maximize heat dissipation and promote long life (L95/100,000 hours at at 25°C).
- 360° symmetric wide distribution for pathways
- CCT Selectable and emergency battery backup options

Construction

- One-piece 8-inch-OD round extruded aluminum shaft with thick side walls for extreme durability and vandal resistance.
- Die-cast aluminum reflector and top cap providing vandal resistance, effective heat dissipation and superior aesthetics
- Optional roughneck zinc plated steel base plate with welded U shaped reinforcement. 304 stainless steel roll pins with 10,000 lb. shear load for ultimate vandal protection
- Exterior parts are protected by super durable textured Akzo Nobel powder coat finish providing superior resistance to corrosion and weathering for maximum gloss retention

Specification

Volts: AC120-277VAC
 Dimming: 0-10V
 Average Rated Life: 50,000hrs
 Environment Location: IP65
 Ambient temp: -20°F to 113°F
 PF: > 0.9
 CRI: RA70

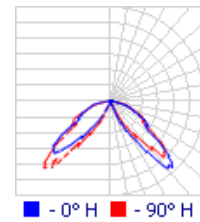
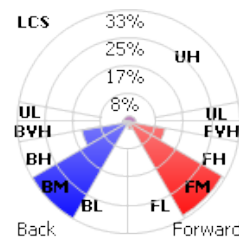
PRODUCT CODE

Example Excalibre cat. OL.345.44.BL.RO

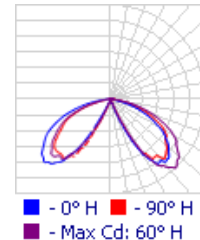
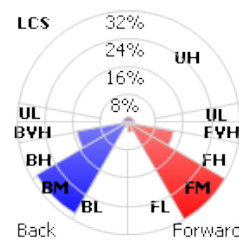


PHOTOMETRICS

Louver Lens (LL)



Open Lens (OL)



Model No	Mod	CCT (*K)	Height	Finish	Options
Excalibre	OL - Open Lens	345 - CCT	44 - 44" Standard	BL - Matt Black	RO - Roughneck
	24W/1780lms	Changeable	50 - 50"	BR - Bronze	Heavy Duty Base
	LL - Louver Lens	3000/4000/5000	56 - 56"	W - White	BB - Battery Backup
	24W/1285lms	3 - 3500	62 - 62"		0 - None
		4 - 4000			
		5 - 5000			

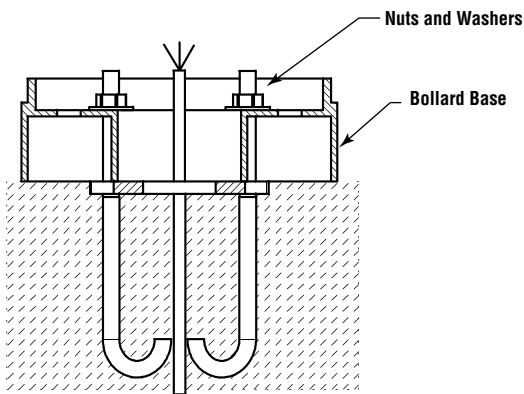
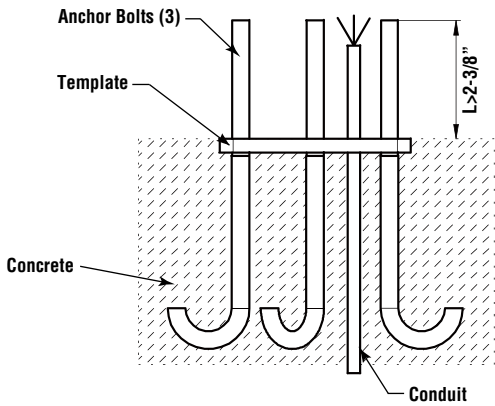
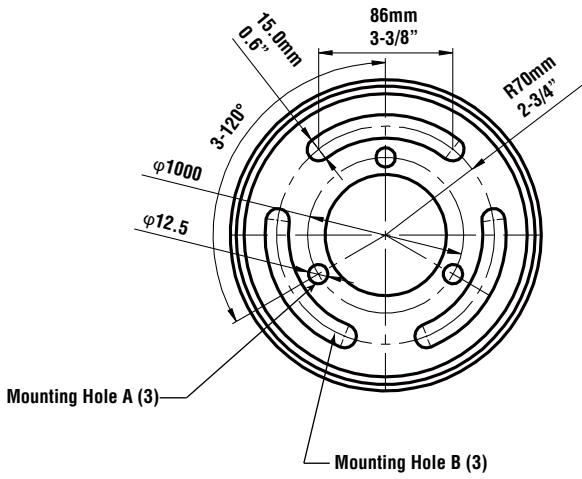


EXCALIBRE

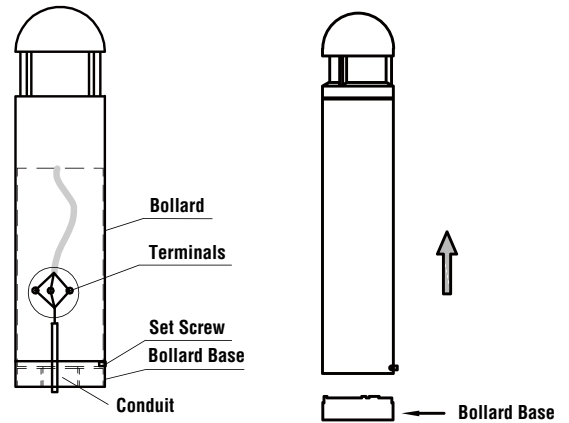
Architectural LED Bollard

STANDARD BASE DETAIL

Note: Base plate dimensions change without notice.
Consult sales rep for factory base plate templates



INSTALLATION



DIMENSIONS

Louver/Open

Weight: 22.0lbs (10.0kg)

