

GPACK

Architectural Wall Light



Applications: Building perimeters, residential courtyards, exterior security, building facades, pathway and perimeter lighting

PERFORMANCE SUMMARY

The GPack Series was designed to provide optimal wall-mounted solutions for both entryway and building perimeter lighting. Using type III asymmetric distributions and a range of outputs these luminaires provide visually comfortable lighting at all mounting heights

With clean lines, the GPack blends seamlessly into any architecture, meeting the everyday lighting needs of engineers and architects alike.

Features

- Standard photo cell for dusk to dawn operation
- Durable die cast aluminium construction
- Premium Nichia LED COB
- Quick fit installation using a high strength rotatable shaft and 4 screws
- Low profile lightweight streamlined architectural design
- Exceptional operating efficiency of 125lm/W
- Type III bat wing optics suitable for building perimeters and entryways
- Fully gasketed polycarbonate lens provides even light distribution and protects electronics
- Dark sky friendly with minimal uplight of less than 5% total lumen output illuminating above 900

Specification

Volts: AC100-277V

Surge Protection: 1kV line-line, 2kV line earth

Average Rated Life: 50,000hrs

Environment Location: IP66

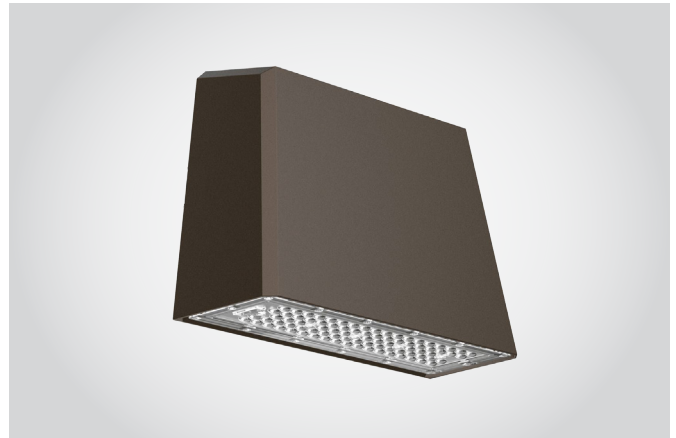
Ambient temp: -22°F to 113°F

PF: > 0.9

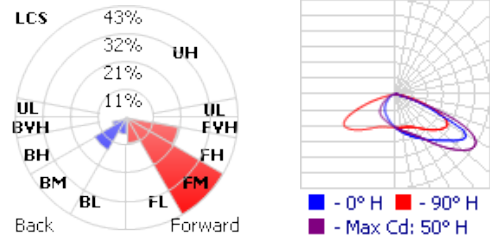
PRODUCT CODE

Example GPack cat. 12DBT34DS

Model No	Wattage (W)	Color	Distribution	Color Temperature (°K)	Options
GPack	12 - 12W/1,500 lms 25 - 25W/3,125 lms 30 - 30W/3,750 lms 40 - 40W/5,000 lms 70 - 70W/8,750 lms	DB - Dark Bronze	T3 - Type 3	4 - 4000 5 - 5000	MD - Motion Sensor EM - Emergency Backup PC - Daylight Photocell 0 - None

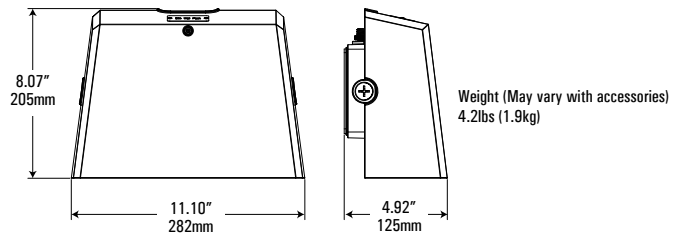


PHOTOMETRICS



DIMENSIONS

40/70W



12/25/30W

