



HiEye Red Series



for Heavy Industrial Spaces

Typical Applications

Steel Mills

Casting Foundaries

Glass Manufacturing Plants

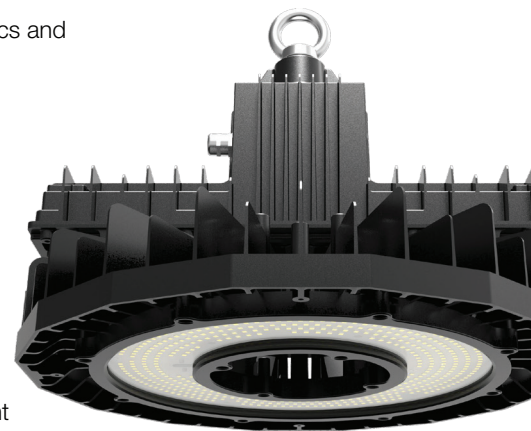
Automotive Plants

Parts Assembly

Machining

Combining the latest in LED technology with our unique thermal flow-through convection system, the HiEye Red Series high bay provides exceptional light output and long life in high ambient temperatures.

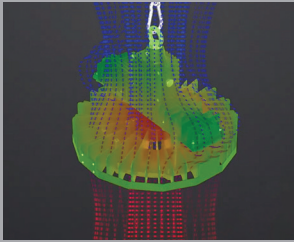
- + Lumen packages ranging from 16,000 to 32,000 provide one-for-one replacement of up to 1000W HID or 10-lamp T5HO fluorescent, saving up to 50% in energy
- + Heat dissipating fins and a unique hollow-center flow through convection system, pull heat off both the optics and driver housing
- + Aerodynamic driver housing promotes natural airflow, ensuring ventilation to vital electrical components
- + Long-life components minimize maintenance costs
- + Tempered glass lens provide high-impact strength and IP65-rated optics, withstanding dust and dirt, resistant to hard chemicals and other degrading elements
- + DLC Premium 5.1 qualified products for maximum rebates, dramatically accelerating return on investment
- + Exceptional operating efficiency of 160lm/W for continual savings
- + Single point mounting configuration for fast installation and simplified replacement of fluorescent and HID fixtures



HiEye Red Series

for Heavy Industrial Spaces

BLACK 90° REFLECTOR (ALB) AND TEMPERED GLASS LENS OPTION (TP)



Ultimate Thermal Protection

- + **AERODYNAMIC DRIVER HOUSING** promotes natural air flow to move heat away from vital electrical components.
- + **ALUMINUM CONSTRUCTION** provides extensive thermal-conductivity.
- + **HEAT-DISSIPATING FINS & A UNIQUE FLOW-THROUGH CONVECTION** system pull heat off both the optics and the driver housing.

MOUNTING OPTIONS

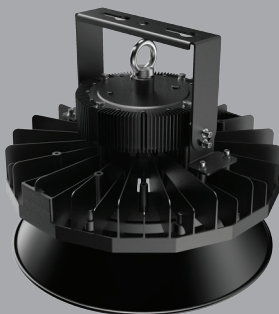
Includes pendant, hook and adjustable ceiling bracket

PREMIUM COMPONENTS High output Nichia 3030 Series LED COB operating at exceptional operating efficiency of 160lm/W for full brightness light levels at ambient temperature as high as 149°F (65°C)

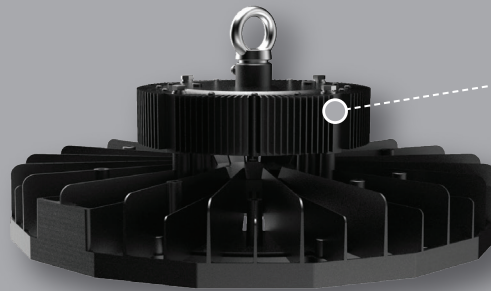


ALUMINUM REFLECTOR

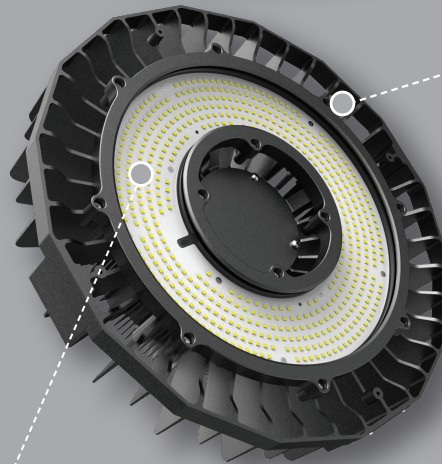
Options include silver (ALU) or elegant black (ALB) aluminum reflector for increased glare control and protection from airborne dust and contaminants



ALB



QUICK RELEASE DRIVER HOUSING provides easy access to internal driver for maintenance and installation



TEMPERED GLASS LENS
The IP65-rated optics provide high impact strength to withstand dust and dirt, and are resistant to chemicals and other degrading elements, even in the worst operating conditions

OVERSIZED HEAT SINK

exceeding 15.8" for entire breadth of the fixture, with a hollow center design and high conductivity aluminium body for accelerated heat dissipation, with only 179°F measured case temperature at 149°F (65°C) ambient

ADDITIONAL FEATURES:

Single-point mounting configuration means fast installation and simple replacement of HID fixtures. Its round design simplifies placement since there are no corners to line up when placed in a row.

Multiple lumen packages range from 16,000 to 32,000 in a single fixture, or mount two fixtures on a twin configuration bracket to achieve up to 64,000 lumens. See the Sunled specification sheet for additional information.

Note: For information on how to order this product, please refer to the specification sheet on www.sunledind.com

