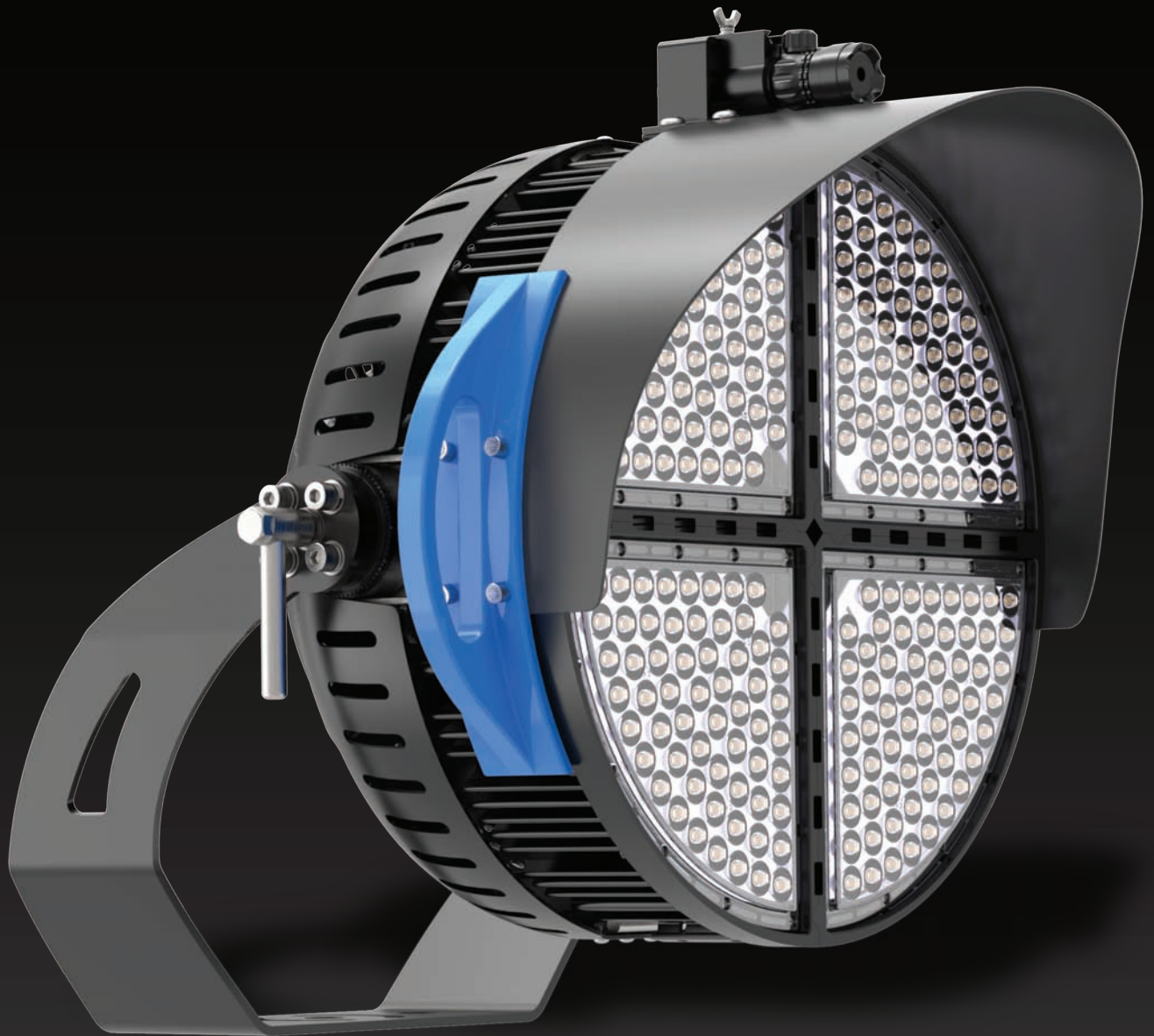


# Hornet Series

LED Sports Lighting Luminaire



LED Flood



## ADVANCED AND AFFORDABLE LED FIELD LIGHTING SOLUTION

---

The Hornet Sports luminaire blends extreme optical control, advanced thermal management and modern, clean aesthetics

Built to last, the housing is a rugged high purity aluminum with versatile mounting configurations that offer simple installation both in new and retrofit constructions. The intelligent network interface allows seamless high level control, enabling data to be transmitted wirelessly and accessed from your fingertips at anywhere, anytime

Compared to other floodlighting solutions the Hornet can outperform all other municipal, high school, collegiate, and semiprofessional outdoor LED field lighting solutions in efficiency, brightness, glare control, light spill, and sky glow and with fewer fixtures consuming far less energy,



## BRIGHTER LIGHT WITH LESS FIXTURES

With efficiency being at its core, the Hornet Series delivers exceptional operation efficiency of 160lpw. Both players and spectators alike can benefit from a higher quality game with the bright uniform distribution advantages of LED technology all while using fewer overall fixtures



# RAISE THE GAME WITH HIGH-PERFORMANCE TECHNOLOGY



## ACCURACY

Legacy HID systems provide good initial light output and but are difficult to contain around the field. Hornet's precisely designed optics ensure a perfect combination of optical cutoff and beam accuracy resulting in elevated lighting levels with the ability to contain spill lighting



## PREMIUM POWER FOR QUALITY LIGHT

The Hornet uses intelligent driver technologies that are the most efficient in converting electricity to light, saving power but producing more light. Whilst in surge suppression adds an additional layer of protection for the luminaire's driver and electronic components



## IN-LASER GUIDANCE

Take the guess work out of aiming, equipped with our industry leading laser guidance technology our light beams can be aimed with ease and accuracy placing the light on the exactly on the desired target for the spot-on results every time



## ZERO DISTURBANCES

Our high grade semi-conductor light engine is designed with a specialized electro-magnetic filter that is not affected or does not create radio frequency disturbances for trouble free operation in any environment



## HIGH-LEVEL COMMUNICATION

Hornet utilizes semi-conductor grade circuitry components and advanced communication systems including WiFi and Bluetooth to allow for complete customization of system features from anywhere, enabling a fully remote control solution for your desired functionality



## SCALABLE LED MODULES

Versatility of output ranging from 50,000-235,000 lumens allows an optimized configuration for different sports and class of play



## FULL CONTROL

The Hornet Series transmits data wirelessly allowing you to easily access capabilities such as scheduling, high-end trim, dimming, zone control, BMS integration, energy monitoring and site-wide control system interface. Each fixtures performance and health can be monitored to identify potential faults, preventing in-game disruptions



## THERMAL MANAGEMENT

Heat sinks specifically designed for effective vertical air convection with a broad heat radiation surface area ensure a lifespan of up to 123,000hrs. The aerodynamic profile delivers excellent passive cooling, preventing long term system degradation



## STAGED DESIGN

Our sports lighting fixtures are designed for the most efficient installation with modular stages design of our fixtures enabling full use of the existing infrastructure, eliminating expense of new pole demolitions, foundations and overall greatly reducing the finished construction costs

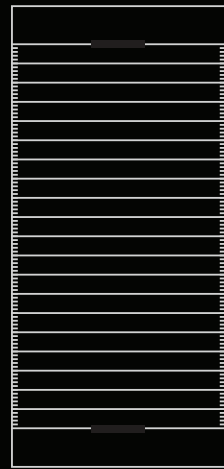


# MAXIMIZED BENEFITS AT A REDUCED COST

Our fixtures have been designed to minimize capital outlay not only with a small and lightweight body but a multitude of mounting options that can be easily mounted to existing infrastructure for an economically sound retrofit solution

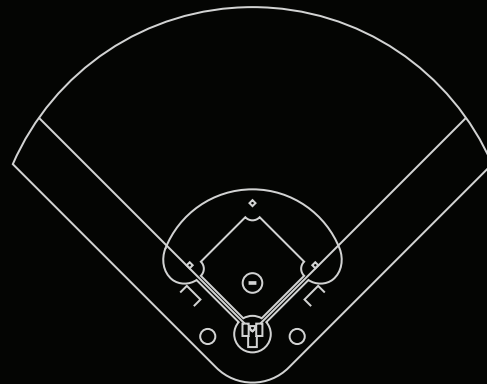
RETROFIT AND OPERATING COSTS REDUCED TO HALF

## FOOTBALL



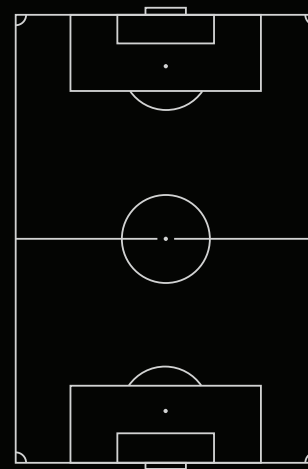
HID 103kW LED 53kW

## BASEBALL/SOFTBALL



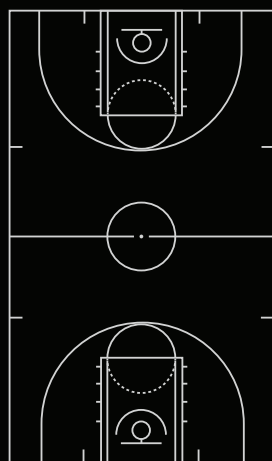
HID 81kW LED 44kW

## SOCCER



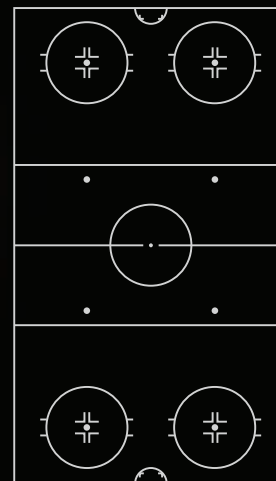
HID 59kW LED 135kW

## BASKETBALL



HID 58kW LED 43kW

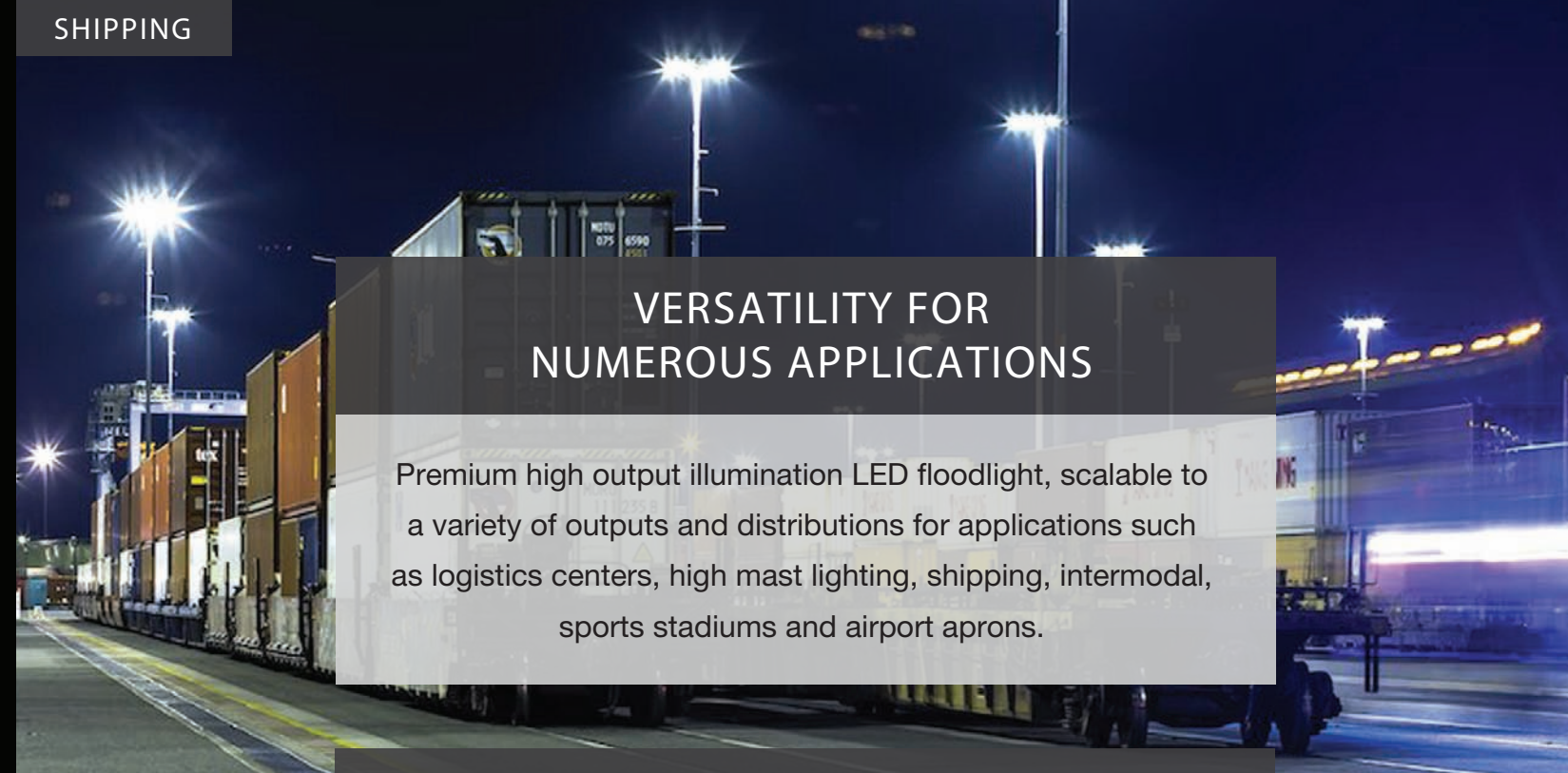
## HOCKEY



HID 137kW LED 102kW



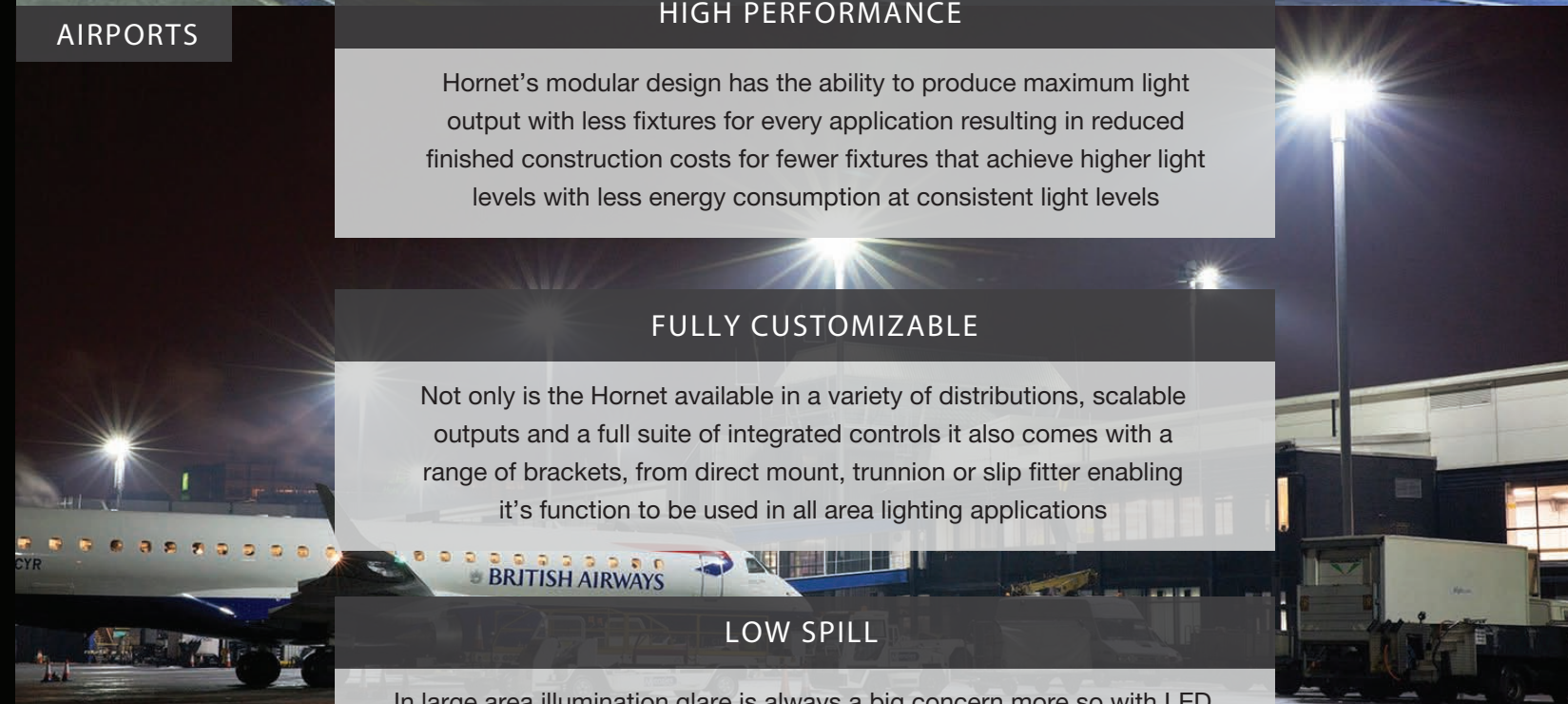
## SHIPPING



## VERSATILITY FOR NUMEROUS APPLICATIONS

Premium high output illumination LED floodlight, scalable to a variety of outputs and distributions for applications such as logistics centers, high mast lighting, shipping, intermodal, sports stadiums and airport aprons.

## AIRPORTS



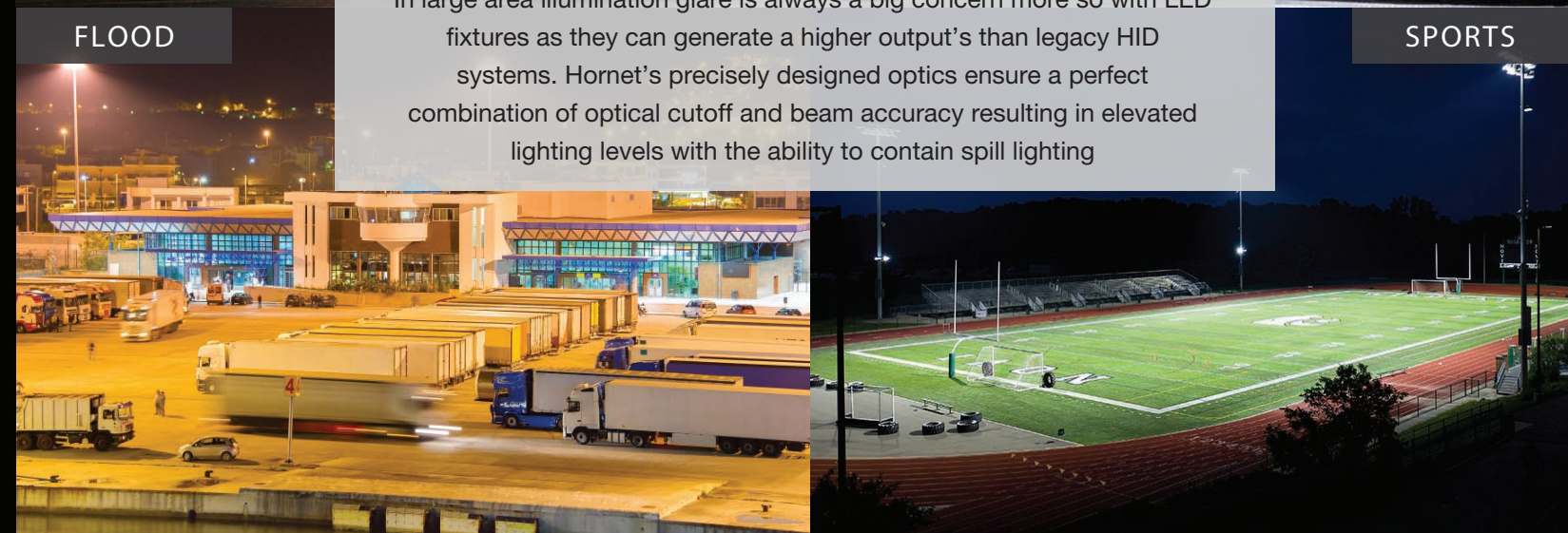
## HIGH PERFORMANCE

Hornet's modular design has the ability to produce maximum light output with less fixtures for every application resulting in reduced finished construction costs for fewer fixtures that achieve higher light levels with less energy consumption at consistent light levels

## FULLY CUSTOMIZABLE

Not only is the Hornet available in a variety of distributions, scalable outputs and a full suite of integrated controls it also comes with a range of brackets, from direct mount, trunnion or slip fitter enabling it's function to be used in all area lighting applications

## FLOOD



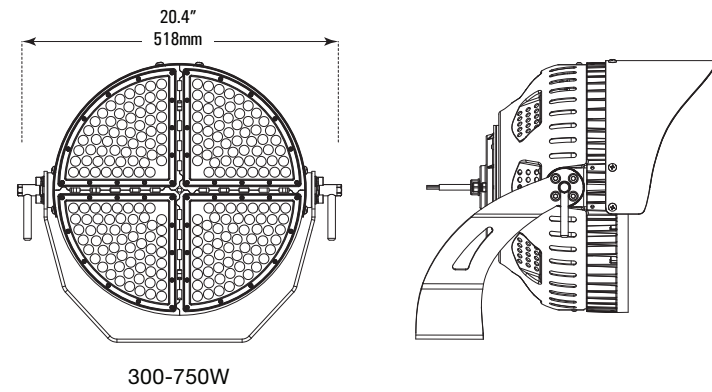
## LOW SPILL

In large area illumination glare is always a big concern more so with LED fixtures as they can generate a higher output's than legacy HID systems. Hornet's precisely designed optics ensure a perfect combination of optical cutoff and beam accuracy resulting in elevated lighting levels with the ability to contain spill lighting

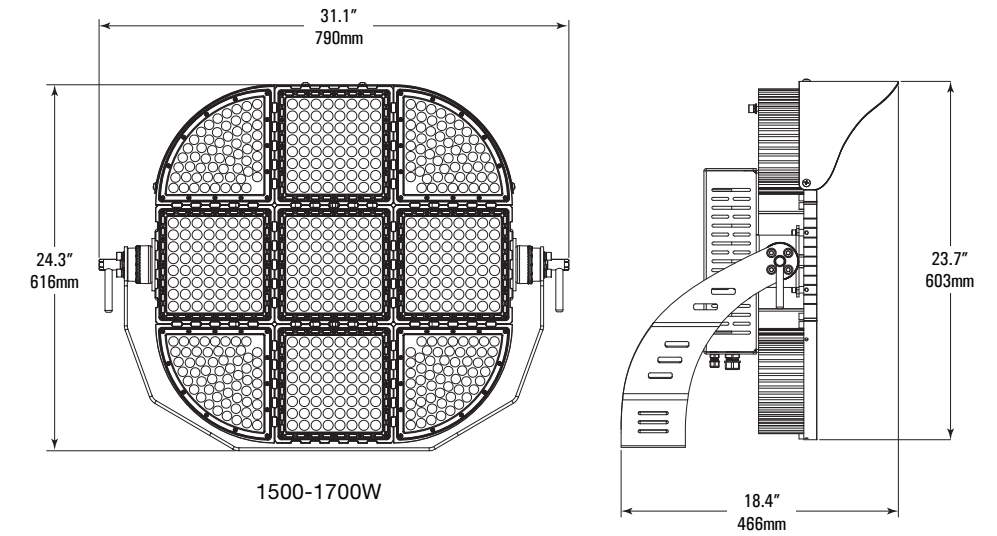
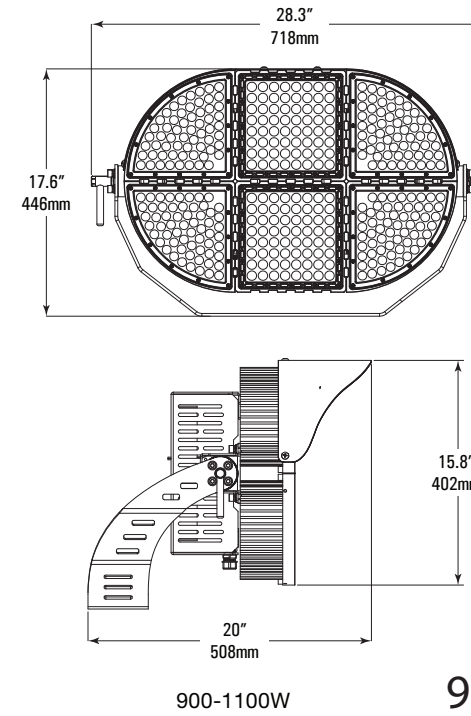
## SPORTS







### 300-750W SPECIFICATIONS



### 900-1700W SPECIFICATIONS

	HORNET 300	HORNET 450	HORNET 550	HORNET 750
LUMEN OUTPUT	>50,000	>70,000	>85,000	>100,000
SYSTEM WATTS	300	450	550	750
INPUT VOLTAGE	100-480VAC	100-480VAC	100-480VAC	100-480VAC
OPERATING TEMP	-40°F to 122°F	-40°F to 122°F	-40°F to 122°F	-40°F to 122°F
CCT*	4/5/5700K	4/5/5700K	4/5/5700K	4/5/5700K
IP RATING	IP66	IP66	IP66	IP66
NEMA RATING	NEMA 2-6	NEMA 2-6	NEMA 2-6	NEMA 2-6
EPA	1.3 ft	1.3 ft	1.3 ft	1.3 ft
WEIGHT	36.4 lbs.	37.5 lbs.	38.6 lbs.	42.0 lbs.

	HORNET 900	HORNET 1100	HORNET 1500	HORNET 1700
LUMEN OUTPUT	>125,000	>150,000	>210,000	>235,000
SYSTEM WATTS	900	1100	1500	1700
INPUT VOLTAGE	100-480VAC	100-480VAC	100-480VAC	100-480VAC
OPERATING TEMP	-40°F to 122°F	-40°F to 122°F	-40°F to 122°F	-40°F to 122°F
CCT*	4/5/5700K	4/5/5700K	4/5/5700K	4/5/5700K
IP RATING	IP66	IP66	IP66	IP66
NEMA RATING	NEMA 2-6	NEMA 2-6	NEMA 2-6	NEMA 2-6
EPA	2.13 ft	2.13 ft	3.4 ft	3.4 ft
WEIGHT	60.6 lbs.	64.0 lbs.	79.4 lbs.	85.5 lbs.

\*Other select colour temperatures available



14210 Roosevelt Ave, Flushing NY 11354  
Phone: 917.563.7078  
[www.sunledind.com](http://www.sunledind.com)

© 2021 Sunled Industries LLC. All Rights Reserved

Please refer to online specifications for most up to date content as specifications are subject to change without notice

Due to continued efforts to stay up-to-date with constantly emerging technology our product specifications are subject to change without notice