

HORNET

Sports Lighting Luminaire



Applications: Professional sports arenas, university and college sports fields, gymnasiums, field houses, high mast lighting, airports

PERFORMANCE SUMMARY

The Hornet Sports luminaire blends extreme optical control, advanced thermal management and modern, clean aesthetics.

Built to last, the housing is a rugged high purity aluminium with versatile mounting configurations that offer simple installation while an intelligent network interface allows seamless high level control.

The Hornet is an advanced upgrade for HID applications with fewer fixtures consuming far less energy

Construction

- Cold forged high purity aluminium improves heat management, preventing long term system degradation
- Modular installation system designed for easy assembly on new construction or pole retrofits
- IP66 rated optics and fixture
- Hinged, compartmented release door with tool-less entry
- Finished in polyester powdercoat process withstanding extreme weather while providing optimal color and gloss retention

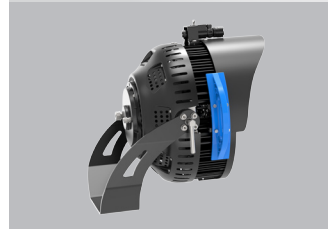
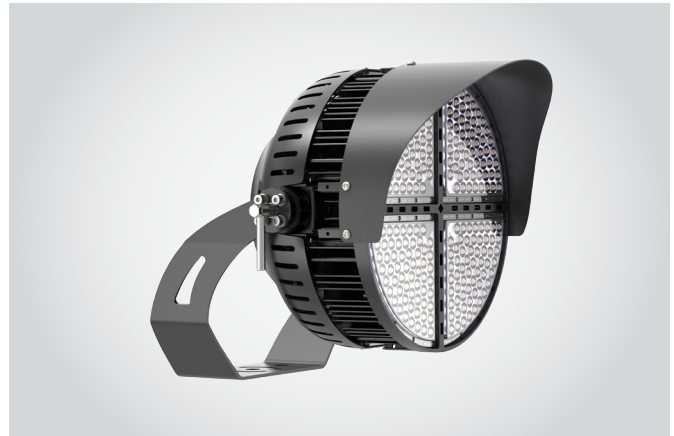
Electrical

- 100-277VAC or 480VAC
- Average rated life L70/L90: >100,000H/>60,000H
- Operating Temperature: -40°F to 122°F
- Premium driver featuring input surge, output over-voltage, short circuit and over temperature protection
- 4kV standard surge protection; 20kV optional
- Zero interference circuitry eliminates electromagnetic disturbances
- High level wireless communication technology for remote monitoring, control and maintenance

PRODUCT CODE

Example Hornet 120 cat. 300.N2.40.BL.SL.AL

Model No	Wattage (W)	Distribution	CCT (°K)	Handle	Accessories	Control
Hornet 120 120-277V	300 - 300W/50,000L	N2 - Nema 2	40 - 4000	BL - Blue	SL - Slipfitter	DMX - DMX
	450 - 450W/70,000L	N3 - Nema 3	50 - 5000	RE - Red	DM - Direct Mount	DIM - 0-10v Dimming
Hornet 480 480V	550 - 550W/85,000L	N4 - Nema 4	57 - 5700	GR - Green	TM - Trunnion Mount	AL - Airlink
	750 - 750W/100,000L	N5 - Nema 5		0 - None	LG - Laser Guidance	0 - None
	900 - 900W/125,000L	N6 - Nema 6			SPD - 20kV Surge Protection Device	
	1100 - 1100W/150,000L					
	1500 - 1500W/210,000L					
	1700 - 1700W/235,000L					



Specification

Lumen Package	50,000 - 235,000
Wattage Range	300 - 1,700
Efficacy	140
Weight lbs (kg)	39.2 (17.8) - 85.5 (38.8)

Optical

- Custom engineered optics provide uniform illumination with minimal light spill in NEMA 2/3/4/5/6
- Optional laser guided aiming pointer
- High frequency flicker free output suitable for broadcast



HORNET

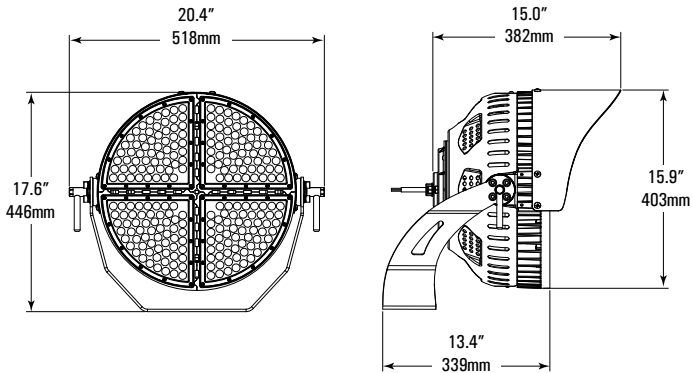
Sports Lighting Luminaire

EPA DATA

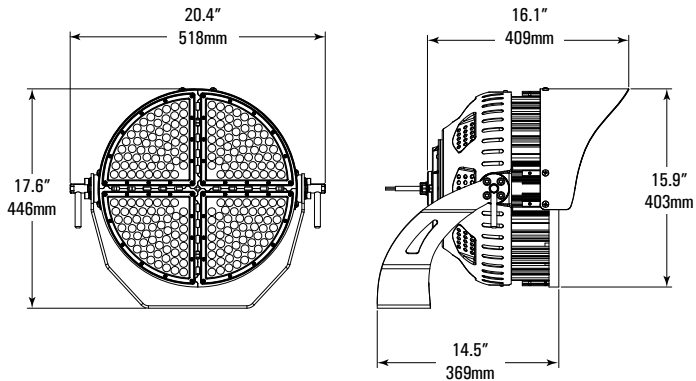
Module Count	System Watts	Weight	EPA
2x2	300-550W	39.2 lbs. (17.8kg)	1.04
2x2	750W	41.9 lbs. (19.0kg)	2.08
2x3	900-1100W	64.0 lbs. (29.0kg)	3.12
3x3	1500-1700W	85.5 lbs. (38.8kg)	4.68

DIMENSIONS

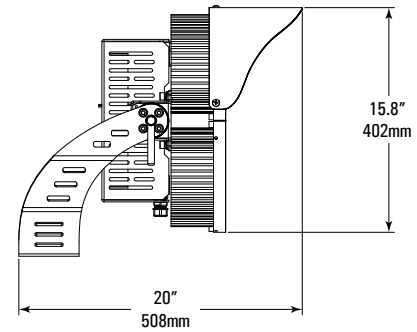
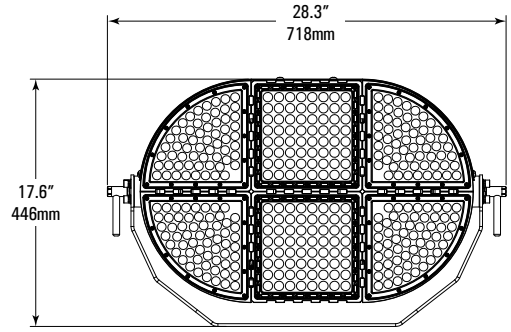
300-550W



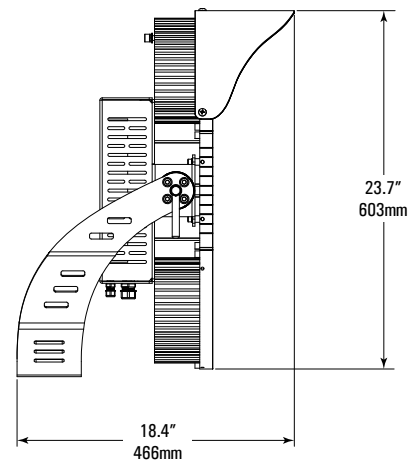
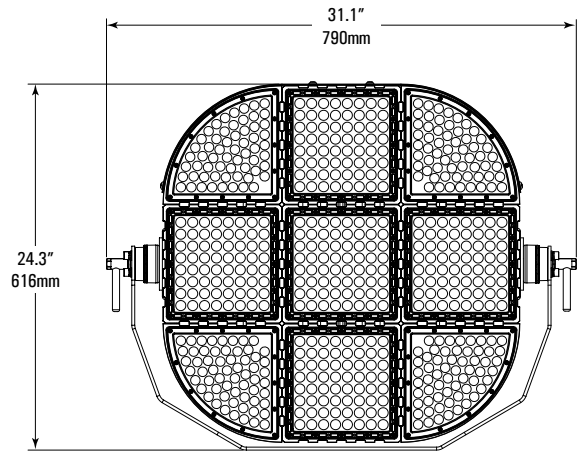
750W



900-1100W



1500-1700W



HORNET

Sports Lighting Luminaire

PERFORMANCE

System Watts	120V	208V	240V	277V	347V	480V
300	2.63A	1.51A	1.31A	1.14A	0.91A	0.88A
450	3.94A	2.27A	1.97A	1.71A	1.36A	0.98A
550	4.82A	2.78A	2.41A	2.08A	1.66A	1.20A
750	6.57A	3.79A	3.28A	2.84A	2.27A	1.64A
900	7.88A	4.54A	3.94A	3.41A	2.72A	1.97A
1100	9.63A	5.55A	4.81A	4.17A	3.33A	2.41A
1500	13.13A	7.57A	6.56A	5.69A	4.54A	3.28A
1700	14.88A	8.58A	7.44A	6.44A	5.14A	3.72A

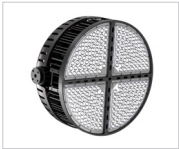
ACCESSORIES



SL
Slipfitter



TM
Trunnion



DM
Direct
Mount



LG
Laser Guided
Aiming



AL
Airlink

HANDLE



BL
Blue



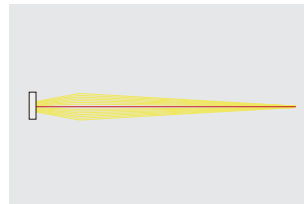
GR
Green



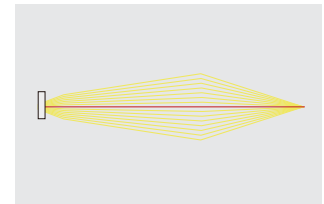
RE
Red

DISTRIBUTION

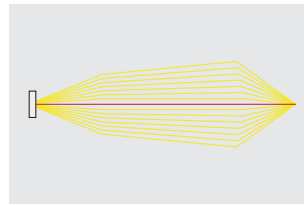
Nema 2



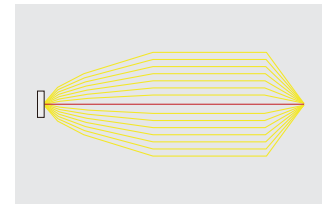
Nema 3



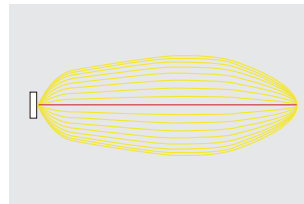
Nema 4



Nema 5



Nema 6



HORNET

Sports Lighting Luminaire



The AirLink enabled by Synapse Wireless Lighting Control System is the perfect solution for commercial, industrial and municipal applications, such as: auto dealerships, parking lots, garages, shopping complexes and warehouses.

AirLink utilizes robust wireless communication via 2.4 GHz Self-Healing Mesh Network which not only increases reliability and accuracy of system, but also eliminates single point of failure.

The flexibility of the system make it perfect for new construction and retrofit projects. The user-friendly AirLink web application is accessible through any device with an internet connection and allows for complete customization of the system's features.

Some capabilities of the system include: occupancy/vacancy sensing, daylight harvesting, scheduling, high-end trim, dimming, zone control, BMS integration and energy monitoring.

The AirLink System

Wireless controls & sensors



Wireless & Override Switches



Occupancy/Vacancy & Daylight Sensors



AirLink-integrated Fixtures



AirLink-compatible Fixtures



Circuit & Zone Controllers

Centralized control & integration



Site Manager Controller

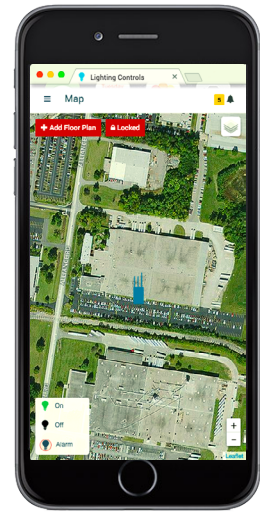


Gateway Module



WiFi, Cellular or Ethernet Connection

Simple-to-use software



AirLink Site Manger: Lighting control web app

