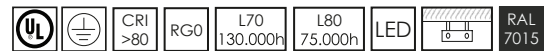




# LORD 4



Riflettore industriale e commerciale a sospensione. Corpo in alluminio pressofuso verniciato con polvere termoidurente poliestere anticorrosione colore antracite, vetro temperato trasparente spessore 5 mm, guarnizione in silicone, alimentatore elettronico 230V. Prodotto costruito in conformità alle vigenti norme EN / IEC 60598-1:2015.

Industrial and commercial suspended high-bay. Die cast aluminium body, painted with polyester coated anticorrosion powder anthracite color, tempered transparent glass mm 5 thickness, silicon gasket, electronic ballast 230V. Fitting manufactured according to the EN / IEC 60598-1:2015 rules.

## CODIFICA/CODE

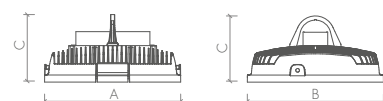
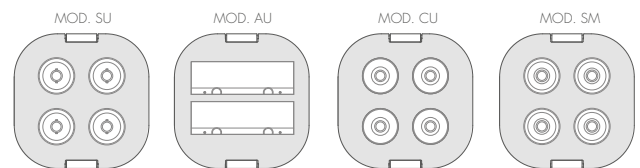
Art.	+	Mod.	+	°K	+	W-tot	+	Opt.
8032	+	SU	+	3 = 3000°K	+	150	+	EL = standard
	+	AU	+	4 = 4000°K	+	175	+	LM = 1-10v
	+	CU	+	5 = 5000°K	+	200	+	LD = dali
	+	SM			+	230	+	E1 = em-1h
					+	280	+	VI = vetro infrangibile/shatterproof glass

## ACCESSORI/ACCESSORIES



## DIMENSIONI/DIMENSION

	A	B	C	Kg	mc		
D1	375	375	230	9,0	0,024	1	50
D2	375	375	250	9,7	0,026	1	50





## mod/SU

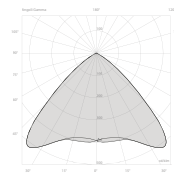
### Offiche e diffusori

Riflettore simmetrico 110° in alluminio satinato.

### Louvers and diffusers

Matt satin symmetric 110° beam aluminium reflector.

- 3000°K = -5.28% lm
- 4000°K = standard
- 5000°K = +0.90% lm



IP65 850° IK08

W-Tot.	Lm (Tc=25°) 4000°K	Lm (Output)	Sost.	Dimension
150	26336	20351	250W SAP-HPS	D1
175	30253	23379	250W SAP-HPS	D1
200	33757	26082	400W JM-MH	D1
230	38054	29404	400W SAP-HPS	D1
280	44761	34586	600W SAP-HPS	D2



## mod/AU

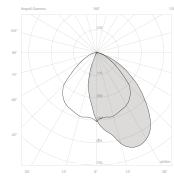
### Offiche e diffusori

Riflettore asimmetrico 45° in alluminio satinato.

### Louvers and diffusers

Matt satin asymmetric 45° beam aluminium reflector.

- 3000°K = -5.28% lm
- 4000°K = standard
- 5000°K = +0.90% lm



IP65 850° IK08

W-Tot.	Lm (Tc=25°) 4000°K	Lm (Output)	Sost.	Dimension
150	26336	19854	250W SAP-HPS	D1
175	30253	22808	250W SAP-HPS	D1
200	33757	25446	400W JM-MH	D1
230	38054	28687	400W SAP-HPS	D1
280	44761	33743	600W SAP-HPS	D2



## mod/CU

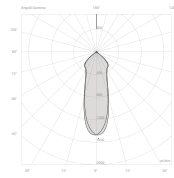
### Offiche e diffusori

Riflettore concentrante 30° in alluminio satinato.

### Louvers and diffusers

Matt satin narrow 30° beam aluminium reflector.

- 3000°K = -5.28% lm
- 4000°K = standard
- 5000°K = +0.90% lm



IP65 850° IK08

W-Tot.	Lm (Tc=25°) 4000°K	Lm (Output)	Sost.	Dimension
150	26336	20227	250W SAP-HPS	D1
175	30253	23236	250W SAP-HPS	D1
200	33757	25923	400W JM-MH	D1
230	38054	29225	400W SAP-HPS	D1
280	44761	34375	600W SAP-HPS	D2



## mod/SM

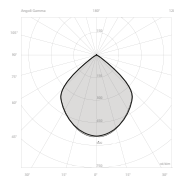
### Offiche e diffusori

Riflettore medio 90° in alluminio satinato.

### Louvers and diffusers

Matt satin medium 90° beam aluminium reflector.

- 3000°K = -5.28% lm
- 4000°K = standard
- 5000°K = +0.90% lm



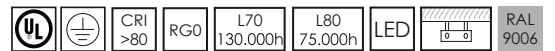
IP65 850° IK08

W-Tot.	Lm (Tc=25°) 4000°K	Lm (Output)	Sost.	Dimension
150	26336	18613	250W SAP-HPS	D1
175	30253	21383	250W SAP-HPS	D1
200	33757	23855	400W JM-MH	D1
230	38054	26894	400W SAP-HPS	D1
280	44761	31634	600W SAP-HPS	D2





# LORD 4



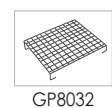
Riflettore industriale e commerciale a sospensione. Corpo in alluminio pressofuso verniciato con polvere termoindurente poliestere anticorrosione colore silver, vetro temperato trasparente spessore 5 mm, guarnizione in silicone, alimentatore elettronico 230V. Prodotto costruito in conformità alle vigenti norme EN / IEC 60598-1:2015.

Industrial and commercial suspended high-bay. Die cast aluminium body, painted with polyester coated anticorrosion powder silver color, tempered transparent glass mm 5 thickness, silicon gasket, electronic ballast 230V. Fitting manufactured according to the EN / IEC 60598-1:2015 rules.

## CODIFICA/CODE

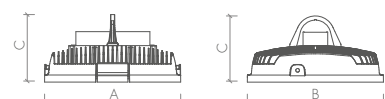
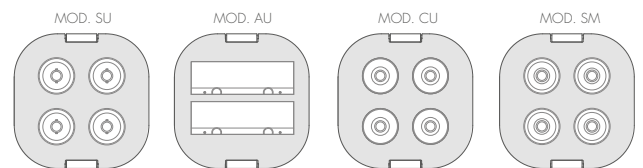
Art.	+	Mod.	+	°K	+	W-tot	+	Opt.
8032	+	SU	+	3 = 3000°K	+	150	+	GL = standard
	+	AU	+	4 = 4000°K	+	175	+	GM = 1-10v
	+	CU	+	5 = 5000°K	+	200	+	GD = dali
	+	SM			+	230	+	G1 = em-1h
					+	280	+	GV = vetro infrangibile/shatterproof glass

## ACCESSORI/ACCESSORIES



## DIMENSIONI/DIMENSION

	A	B	C	Kg	mc		
D1	375	375	230	9,0	0,024	1	50
D2	375	375	250	9,7	0,026	1	50





## mod/SU

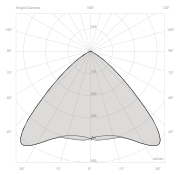
### Offiche e diffusori

Riflettore simmetrico 110° in alluminio satinato.

### Louvers and diffusers

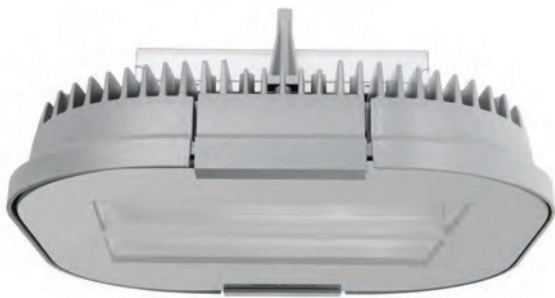
Matt satin symmetric 110° beam aluminium reflector.

- 3000°K = -5.28% lm
- 4000°K = standard
- 5000°K = +0.90% lm



IP65 850° IK08

W-Tot.	Lm (Tc=25°) 4000°K	Lm (Output)	Sost.	Dimension
150	26336	20351	250W SAP-HPS	D1
175	30253	23379	250W SAP-HPS	D1
200	33757	26082	400W JM-MH	D1
230	38054	29404	400W SAP-HPS	D1
280	44761	34586	600W SAP-HPS	D2



## mod/AU

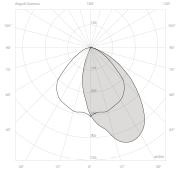
### Offiche e diffusori

Riflettore asimmetrico 45° in alluminio satinato.

### Louvers and diffusers

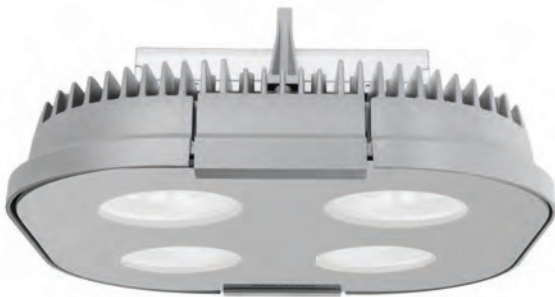
Matt satin asymmetric 45° beam aluminium reflector.

- 3000°K = -5.28% lm
- 4000°K = standard
- 5000°K = +0.90% lm



IP65 850° IK08

W-Tot.	Lm (Tc=25°) 4000°K	Lm (Output)	Sost.	Dimension
150	26336	19854	250W SAP-HPS	D1
175	30253	22808	250W SAP-HPS	D1
200	33757	25446	400W JM-MH	D1
230	38054	28687	400W SAP-HPS	D1
280	44761	33743	600W SAP-HPS	D2



## mod/CU

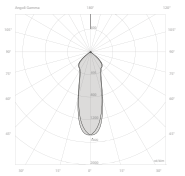
### Offiche e diffusori

Riflettore concentrante 30° in alluminio satinato.

### Louvers and diffusers

Matt satin narrow 30° beam aluminium reflector.

- 3000°K = -5.28% lm
- 4000°K = standard
- 5000°K = +0.90% lm



IP65 850° IK08

W-Tot.	Lm (Tc=25°) 4000°K	Lm (Output)	Sost.	Dimension
150	26336	20227	250W SAP-HPS	D1
175	30253	23236	250W SAP-HPS	D1
200	33757	25923	400W JM-MH	D1
230	38054	29225	400W SAP-HPS	D1
280	44761	34375	600W SAP-HPS	D2



## mod/SM

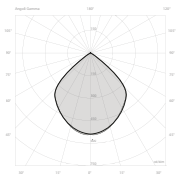
### Offiche e diffusori

Riflettore medio 90° in alluminio satinato.

### Louvers and diffusers

Matt satin medium 90° beam aluminium reflector.

- 3000°K = -5.28% lm
- 4000°K = standard
- 5000°K = +0.90% lm



IP65 850° IK08

W-Tot.	Lm (Tc=25°) 4000°K	Lm (Output)	Sost.	Dimension
150	26336	18613	250W SAP-HPS	D1
175	30253	21383	250W SAP-HPS	D1
200	33757	23855	400W JM-MH	D1
230	38054	26894	400W SAP-HPS	D1
280	44761	31634	600W SAP-HPS	D2