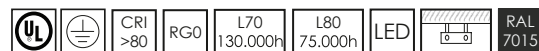




LORD ELLIT



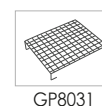
Riflettore industriale e commerciale a sospensione. Corpo in alluminio pressofuso verniciato con polvere termoindurente poliestere anticorrosione colore antracite, vetro temperato trasparente spessore 5 mm, guarnizione in silicone, alimentatore elettronico 230V. Prodotto costruito in conformità alle vigenti norme EN / IEC 60598-1:2015.

Industrial and commercial suspended high-bay. Die cast aluminium body, painted with polyester coated anticorrosion powder anthracite color, tempered transparent glass mm 5 thickness, silicon gasket, electronic ballast 230V. Fitting manufactured according to the EN / IEC 60598-1:2015 rules.

CODIFICA/CODE

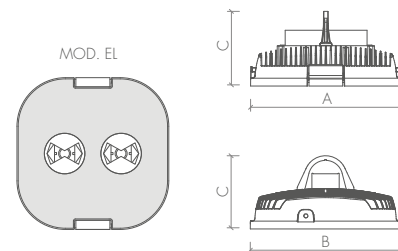
Art.	+	Mod.	+	°K	+	W-tot	+	Opt.
8031	+	EL	+	3 = 3000°K	+	080	+	EL = standard
				4 = 4000°K		115		LM = 1-10v
				5 = 5000°K		120		LD = dali
						150		E1 = em-1h
						185		VI = vetro infrangibile/shatterproof glass
						200		

ACCESSORI/ACCESSORIES



DIMENSIONI/DIMENSION

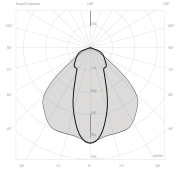
	A	B	C	Kg	mc		
D1	375	375	230	8,7	0,024	1	50
D2	375	375	230	9,0	0,024	1	50



mod/EL

Optiche e diffusori
Riflettore ellittico in alluminio satinato.

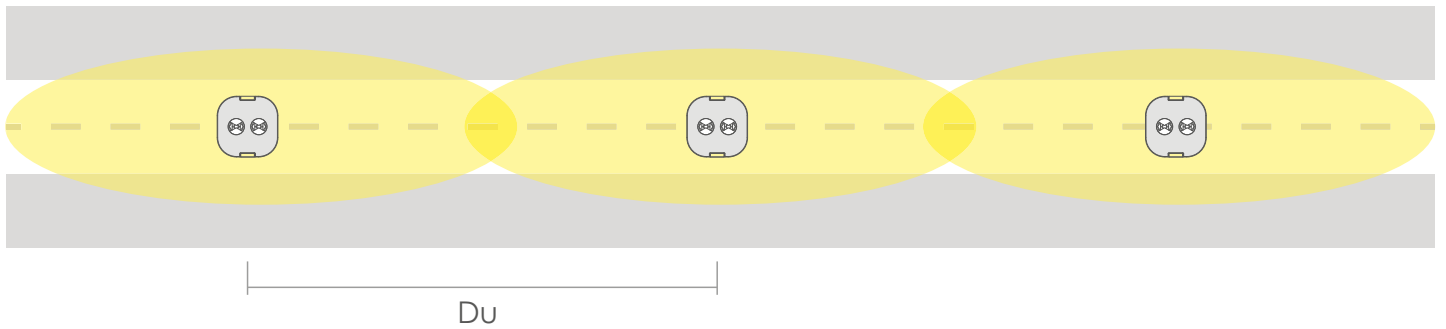
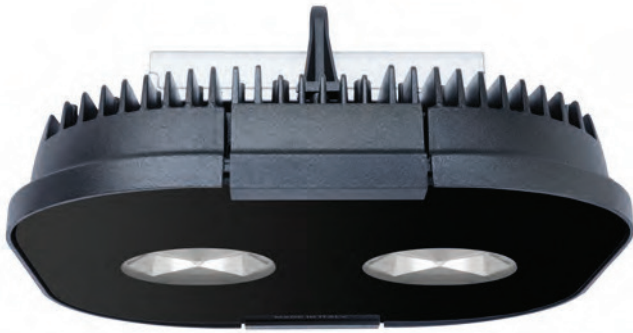
Louvers and diffusers
Matt satin elliptical aluminium reflector.



IP65 850° IK08

- 3000°K = -5.28% lm
- 4000°K = standard
- 5000°K = +0.90% lm

W-Tot.	Lm (Tc=25°) 4000°K	Lm (Output)	Sost.	Dimension
80	13809	10535	150W JM-MH	D1
115	18682	14252	250W JM-MH	D1
120	19875	15124	250W JM-MH	D1
150	24018	18275	250W SAP-HPS	D1
185	28396	21606	400W JM-MH	D2
200	30326	23077	400W SAP-HPS	D2



Uniformità

il passo di installazione per ottenere l'uniformità di illuminamento:
 $Du = 1,35 \times hu$

hu = altezza utile di installazione

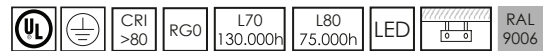
Uniformity

Installation step to achieve uniformity of illuminance:
 $Du = 1,35 \times hu$

hu = usefull height of installation



LORD ELLIT



Riflettore industriale e commerciale a sospensione. Corpo in alluminio pressofuso verniciato con polvere termoindurente poliestere anticorrosione colore silver, vetro temperato trasparente spessore 5 mm, guarnizione in silicone, alimentatore elettronico 230V. Prodotto costruito in conformità alle vigenti norme EN / IEC 60598-1:2015.

Industrial and commercial suspended high-bay. Die cast aluminium body, painted with polyester coated anticorrosion powder silver color, tempered transparent glass mm 5 thickness, silicon gasket, electronic ballast 230V. Fitting manufactured according to the EN / IEC 60598-1:2015 rules.

CODIFICA/CODE

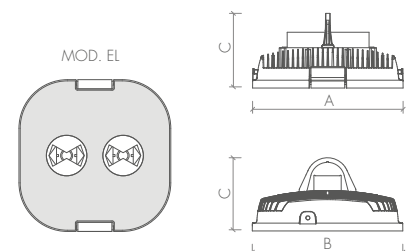
Art.	+	Mod.	+	°K	+	W-tot	+	Opt.
8031		EL		3 = 3000°K		080		GL = standard
				4 = 4000°K		115		GM = 1-10v
				5 = 5000°K		120		GD = dali
						150		G1 = em-1h
						185		GV = vetro infrangibile/shatterproof glass
						200		



ACCESSORI/ACCESSORIES

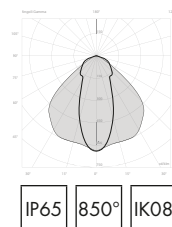
DIMENSIONI/DIMENSION

	A	B	C	Kg	mc		
D1	375	375	230	8,7	0,024	1	50
D2	375	375	230	9,0	0,024	1	50



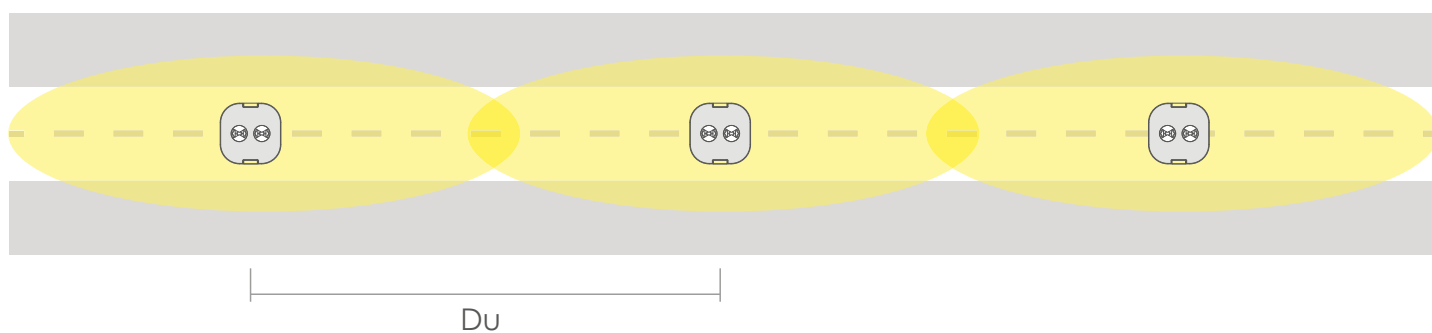
mod/EL

Optiche e diffusori
Riflettore ellittico in alluminio satinato.
Louvers and diffusers
Matt satin elliptical aluminium reflector.



- 3000°K = -5.28% lm
- 4000°K = standard
- 5000°K = +0.90% lm

W-Tot.	Lm (Tc=25° 4000°K)	Lm (Output)	Sost.	Dimension
80	13809	10535	150W JM-MH	D1
115	18682	14252	250W JM-MH	D1
120	19875	15124	250W JM-MH	D1
150	24018	18275	250W SAP-HPS	D1
185	28396	21606	400W JM-MH	D2
200	30326	23077	400W SAP-HPS	D2



Uniformità

il passo di installazione per ottenere l'uniformità di illuminamento:
 $DU = 1,35 \times hu$

hu = altezza utile di installazione

Uniformity

Installation step to achieve uniformity of illuminance:
 $DU = 1,35 \times hu$

hu = usefull height of installation