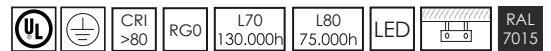




LORD



Riflettore industriale e commerciale a sospensione. Corpo in alluminio pressofuso verniciato con polvere termoindurente poliestere anticorrosione colore antracite, vetro temperato trasparente spessore 5 mm, guarnizione in silicone, alimentatore elettronico 230V. Prodotto costruito in conformità alle vigenti norme EN / IEC 60598-1:2015.

Industrial and commercial suspended high-bay. Die cast aluminium body, painted with polyester coated anticorrosion powder anthracite color, tempered transparent glass mm 5 thickness, silicon gasket, electronic ballast 230V. Fitting manufactured according to the EN / IEC 60598-1:2015 rules.

CODIFICA/CODE

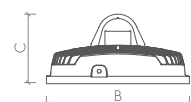
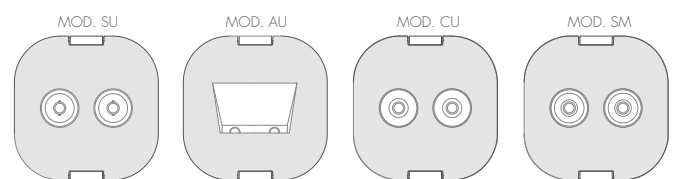
Art.	+	Mod.	+	°K	+	W-tot	+	Opt.
8031		SU		3 = 3000°K		080		EL = standard
		AU		4 = 4000°K		115		LM = 1-10v
		CU		5 = 5000°K		120		LD = dali
		SM				150		E1 = em-1h
						185		VI = vetro infrangibile/shatterproof glass
						200		



ACCESSORI/ACCESSORIES

DIMENSIONI/DIMENSION

	A	B	C	Kg	mc		
D1	375	375	230	8,7	0,024	1	50
D2	375	375	230	9,0	0,024	1	50





mod/SU

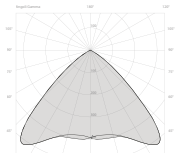
Offiche e diffusori

Riflettore simmetrico 110° in alluminio satinato.

Louvers and diffusers

Matt satin symmetric 110° beam aluminium reflector.

- 3000°K = -5.28% lm
- 4000°K = standard
- 5000°K = +0.90% lm



IP65 850° IK08

W-Tot.	Lm (Tc=25°) 4000°K	Lm (Output)	Sost.	Dimension
80	13809	10698	150W JM-MH	D1
115	18682	14473	250W JM-MH	D1
120	19875	15358	250W JM-MH	D1
150	24018	18558	250W SAP-HPS	D1
185	28396	21940	400W JM-MH	D2
200	30326	23434	400W SAP-HPS	D2



mod/AU

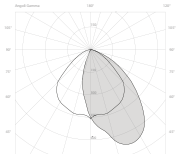
Offiche e diffusori

Riflettore asimmetrico 45° in alluminio satinato.

Louvers and diffusers

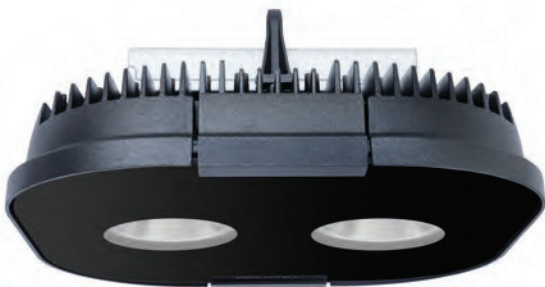
Matt satin asymmetric 45° beam aluminium reflector.

- 3000°K = -5.28% lm
- 4000°K = standard
- 5000°K = +0.90% lm



IP65 850° IK08

W-Tot.	Lm (Tc=25°) 4000°K	Lm (Output)	Sost.	Dimension
80	13809	10437	150W JM-MH	D1
115	18682	14120	250W JM-MH	D1
120	19875	14983	250W JM-MH	D1
150	24018	18105	250W SAP-HPS	D1
185	28396	21405	400W JM-MH	D2
200	30326	22863	400W SAP-HPS	D2



mod/CU

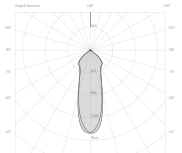
Offiche e diffusori

Riflettore concentrante 30° in alluminio satinato.

Louvers and diffusers

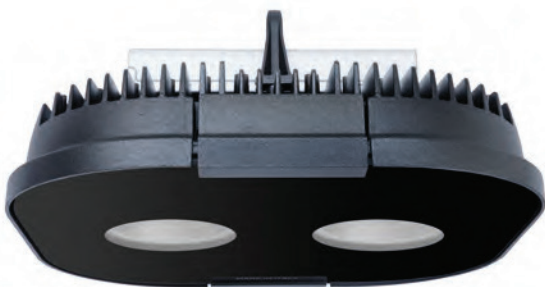
Matt satin narrow 30° beam aluminium reflector.

- 3000°K = -5.28% lm
- 4000°K = standard
- 5000°K = +0.90% lm



IP65 850° IK08

W-Tot.	Lm (Tc=25°) 4000°K	Lm (Output)	Sost.	Dimension
80	13809	10632	150W JM-MH	D1
115	18682	14385	250W JM-MH	D1
120	19875	15264	250W JM-MH	D1
150	24018	18445	250W SAP-HPS	D1
185	28396	21807	400W JM-MH	D2
200	30326	23291	400W SAP-HPS	D2



mod/SM

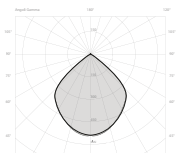
Offiche e diffusori

Riflettore medio 90° in alluminio satinato.

Louvers and diffusers

Matt satin medium 90° beam aluminium reflector.

- 3000°K = -5.28% lm
- 4000°K = standard
- 5000°K = +0.90% lm

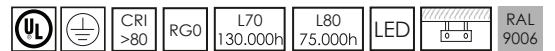


IP65 850° IK08

W-Tot.	Lm (Tc=25°) 4000°K	Lm (Output)	Sost.	Dimension
80	13809	9785	150W JM-MH	D1
115	18682	13238	250W JM-MH	D1
120	19875	14047	250W JM-MH	D1
150	24018	16974	250W SAP-HPS	D1
185	28396	20067	400W JM-MH	D2
200	30326	21434	400W SAP-HPS	D2



LORD

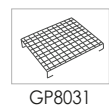


Riflettore industriale e commerciale a sospensione. Corpo in alluminio pressofuso verniciato con polvere termoindurente poliestere anticorrosione colore silver, vetro temperato trasparente spessore 5 mm, guarnizione in silicone, alimentatore elettronico 230V. Prodotto costruito in conformità alle vigenti norme EN / IEC 60598-1:2015.

Industrial and commercial suspended high-bay. Die cast aluminium body, painted with polyester coated anticorrosion powder silver color, tempered transparent glass mm 5 thickness, silicon gasket, electronic ballast 230V. Fitting manufactured according to the EN / IEC 60598-1:2015 rules.

CODIFICA/CODE

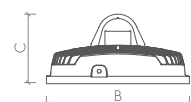
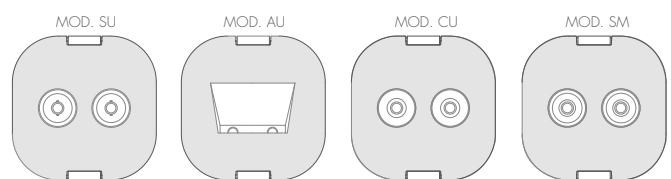
Art.	+	Mod.	+	°K	+	W-tot	+	Opt.
8031	+	SU	+	3 = 3000°K	+	080	+	GL = standard
	+	AU	+	4 = 4000°K	+	115	+	GM = 1-10v
	+	CU	+	5 = 5000°K	+	120	+	GD = dali
	+	SM			+	150	+	G1 = em-1h
					+	185	+	GV = vetro infrangibile/shatterproof glass
					+	200		



ACCESSORI/ACCESSORIES

DIMENSIONI/DIMENSION

	A	B	C	Kg	mc		
D1	375	375	230	8,7	0,024	1	50
D2	375	375	230	9,0	0,024	1	50





mod/SU

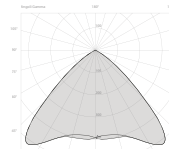
Offiche e diffusori

Riflettore simmetrico 110° in alluminio satinato.

Louvers and diffusers

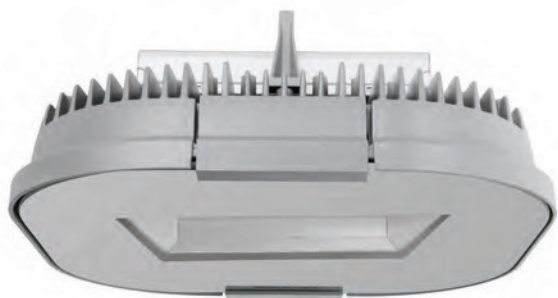
Matt satin symmetric 110° beam aluminium reflector.

- 3000°K = -5.28% lm
- 4000°K = standard
- 5000°K = +0.90% lm



IP65 850° IK08

W-Tot.	Lm (Tc=25°) 4000°K	Lm (Output)	Sost.	Dimension
80	13809	10698	150W JM-MH	D1
115	18682	14473	250W JM-MH	D1
120	19875	15358	250W JM-MH	D1
150	24018	18558	250W SAP-HPS	D1
185	28396	21940	400W JM-MH	D2
200	30326	23434	400W SAP-HPS	D2



mod/AU

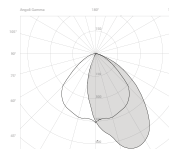
Offiche e diffusori

Riflettore asimmetrico 45° in alluminio satinato.

Louvers and diffusers

Matt satin asymmetric 45° beam aluminium reflector.

- 3000°K = -5.28% lm
- 4000°K = standard
- 5000°K = +0.90% lm



IP65 850° IK08

W-Tot.	Lm (Tc=25°) 4000°K	Lm (Output)	Sost.	Dimension
80	13809	10437	150W JM-MH	D1
115	18682	14120	250W JM-MH	D1
120	19875	14983	250W JM-MH	D1
150	24018	18105	250W SAP-HPS	D1
185	28396	21405	400W JM-MH	D2
200	30326	22863	400W SAP-HPS	D2



mod/CU

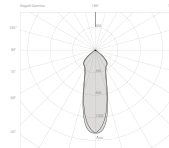
Offiche e diffusori

Riflettore concentrante 30° in alluminio satinato.

Louvers and diffusers

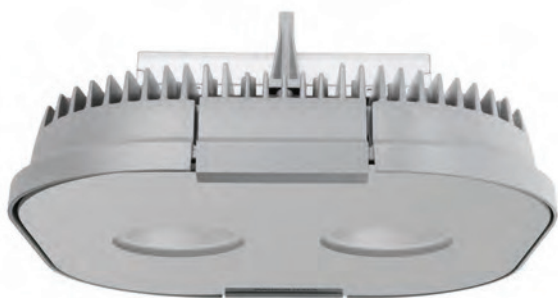
Matt satin narrow 30° beam aluminium reflector.

- 3000°K = -5.28% lm
- 4000°K = standard
- 5000°K = +0.90% lm



IP65 850° IK08

W-Tot.	Lm (Tc=25°) 4000°K	Lm (Output)	Sost.	Dimension
80	13809	10632	150W JM-MH	D1
115	18682	14385	250W JM-MH	D1
120	19875	15264	250W JM-MH	D1
150	24018	18445	250W SAP-HPS	D1
185	28396	21807	400W JM-MH	D2
200	30326	23291	400W SAP-HPS	D2



mod/SM

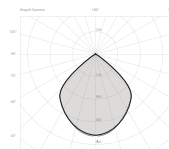
Offiche e diffusori

Riflettore medio 90° in alluminio satinato.

Louvers and diffusers

Matt satin medium 90° beam aluminium reflector.

- 3000°K = -5.28% lm
- 4000°K = standard
- 5000°K = +0.90% lm



IP65 850° IK08

W-Tot.	Lm (Tc=25°) 4000°K	Lm (Output)	Sost.	Dimension
80	13809	9785	150W JM-MH	D1
115	18682	13238	250W JM-MH	D1
120	19875	14047	250W JM-MH	D1
150	24018	16974	250W SAP-HPS	D1
185	28396	20067	400W JM-MH	D2
200	30326	21434	400W SAP-HPS	D2