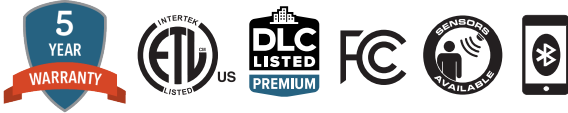


NEBULA SMART

Smart Backlit Panel Troffer



Applications: Office buildings, education and healthcare, convenience stores, supermarkets and retail, civic and government

PERFORMANCE SUMMARY

The Nebula Smart Panel Series from Sunled Industries is a versatile luminaire designed to provide a comfortable flicker free lighting output. It comes in 1x4, 2x2 and 2x4 wide beam with enhanced backlit optics producing low glare and consistent illumination for a shadowless, uniform lighting distribution.

Complete with embedded wireless smart technology the Nebula Smart Series is the ideal low profile replacement for general lighting applications such as open offices, schools, healthcare and retail.

Electrical

- Plug and Play Bluetooth Smart Technology (BST) direct wireless control
- Smart sensor control equipped with embedded daylighting and motion sensors for intuitive lighting control
- Lumen packages ranging from 3,750 to 6,250 lumens
- Premium driver features over-voltage, under-voltage, short-circuit and over temperature protection
- Emergency battery backup option

Construction

- Translucent white polystyrene optics deliver soft and comfortable lighting for a more uniform output
- Light-weight cold rolled steel frame and aluminium backing
- Lead free and eco-friendly with zero maintenance design
- 1.37" mount depth

NOTES

¹E1/E2 and BST can be selected together

²BST includes smart sensor function that can be programmed with smart phone app or wall switches (at least one per job location)

³Quantity required 'n'

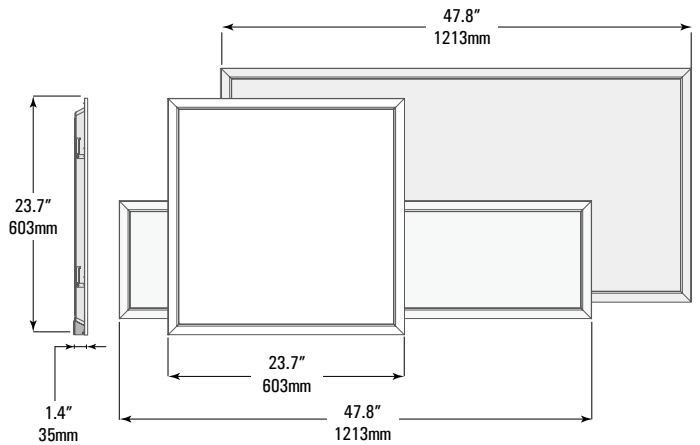
PRODUCT CODE

Example Nebula Smart cat. 2/4.40.35.S.WS(2).BST

Model No	Dimension	Wattage (W)/ Lumens	CCT (°K)	Mounting	Wall Switches ³	Options ¹
Nebula Smart	1/4 - 1x4ft 11.9 x 47.8 x 1.37"	30 - 30W/3,750Lm 36 - 36W/4,500Lm	35 - 3500 4 - 4000	S - Surface SS - Suspended	SRS(n) - Solar Remote Switch WS(n) - Wireless Wall Switch	E1 - 8W Emergency E2 - 15W Emergency
	2/2 - 2x2ft 23.7 x 23.7 x 1.37"	30 - 30W/3,750Lm 36 - 36W/4,500Lm	5 - 5000	R - Recessed	0 - None	BST ² - Bluetooth Smart Control
	2/4 - 2x4ft 23.7 x 47.8 x 1.37"	40 - 40W/5,000Lm 50 - 50W/6,250Lm				D - 0-10V Dimmable 0 - None



DIMENSIONS

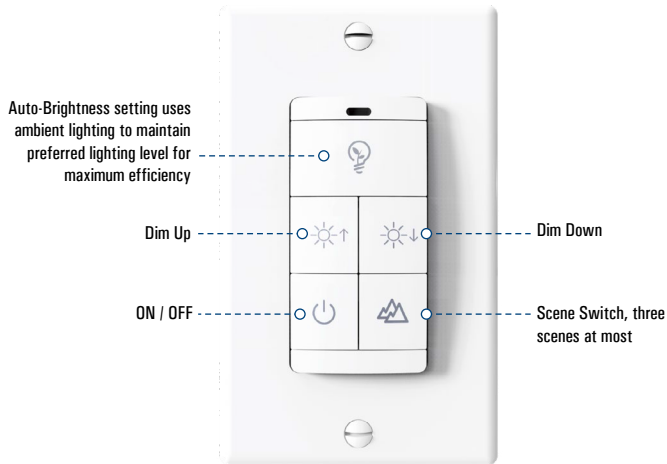


NEBULA SMART

Smart Backlit Panel Troffer

WIRELESS LIGHTING CONTROL SYSTEM

Bluetooth Switch



Smart Sensor



Features

- Occupancy sensor and daylight harvesting sensor
- Embedded Bluetooth communication module
- Supports 1-channel and 2-channel dimming
- Low profile and can be inserted into any luminaries
- Operated by Light Remote LED APP
- Can match with various antennas in different luminaries.
- Working temperature: -30~80°C (-22~176°F)

Wall Switches

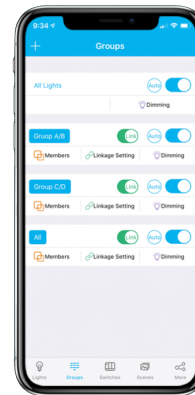
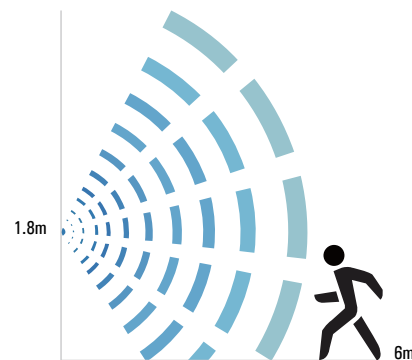
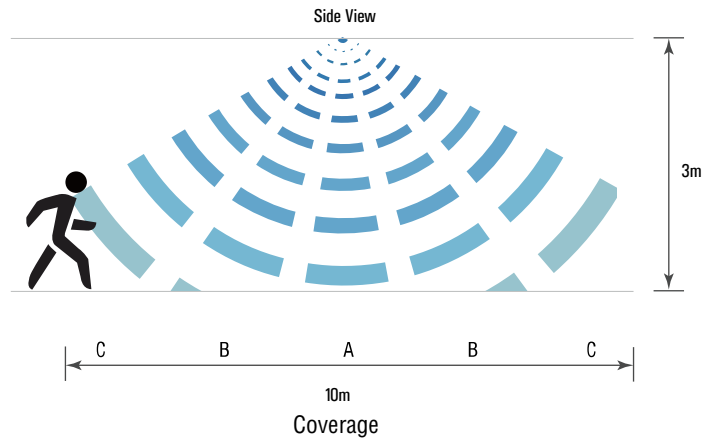


SRS
Solar Remote
Switch



WS
Smart Wireless
Wallswitch

Detection Area



App Control

- Instant scenes
- Auto brightness
- Auto calibration
- High end trim
- Group control
- Dimming
- Bypass mode

NEBULA SMART

Smart Backlit Panel Troffer

SPECIFICATION

ITEM	DETAILS
Input Voltage	AC100-277V
CRI	>80
Average Rated Life	50,000hrs
Environment Location	Wet Location
PF	>0.9
Operating Temperature	-4°F-104°F (-20°C-40°C)
Emergency	1.5 or 3.0hr/120-347V
THD	<20%
Beam Angle	120°

PHOTOMETRICS

