

SHADOW

LED Louver Troffer



Applications: Office buildings, new and retrofit corporate fitouts, education and healthcare, government

PERFORMANCE SUMMARY

Using advanced LEDs and superior luminaire design, the Shadow Series delivers even illumination and reduced glare, while creating a quiet ceiling with improved proportions

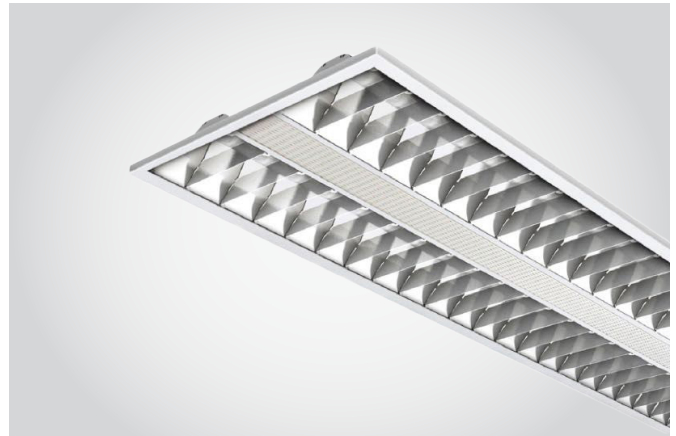
The Shadow Series offers a high-performance energy-saving alternative to fluorescent and parabolic fixtures. Multiple lumen packages, and integrated controls provide exceptional value; ideal for retail, educational, and commercial applications.

Features

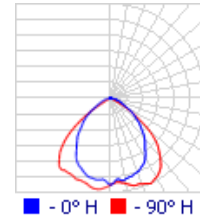
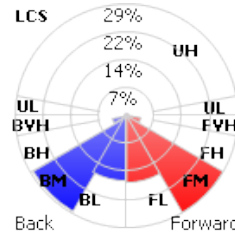
- Low glare, high efficiency dual louvers combined with central illuminated diffused panels
- Next Gen LEDs, 4000k SDCM3 CRI 85+
- Creates a quiet ceiling with improved proportions
- Designed for a standard grid ceiling, special sizes to order and air handling options
- Sturdy low profile steel body, powder coated, phosphate pre-treatment
- High efficiency central louvers with excellent optical control
- Remote premium flicker free drivers, DALI and other dimming versions available

Specification

Volts: AC100-277V
 Average Rated Life: L80/50,000hrs
 CRI: RA85
 PF: > 0.9
 Distribution: 100°
 Ambient Temp: -4°F to 122°F
 Dimming: 0-10V
 Emergency: 3hr/18W/6000mAh



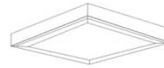
PHOTOMETRICS



R
Recessed



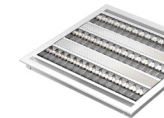
D
Drywall Kit



S
Surface



SS
Suspended



RA
Return Air Slots

PRODUCT CODE

Example Shadow 6/6 cat. 30.3.R.RA.DIM

Model No	Wattage (W)/ Dimensions	CCT (°K)	Mounting	Options	Control
Shadow 6/6	35 - 35W/3,500 lms 603mm x 603mm x 18mm	3 - 3000 4 - 4000	R - Recessed S - Surface	RA - Return air slots 0 - None	DIM - 0-10V Dimmable
Shadow 3/12	40 - 40W/4,000 lms 301mm x 1212mm x 18mm	5 - 5000 57 - 5700	D - Drywall Kit SS - Suspended		DAL - DALI EM - Emergency
Shadow 6/12	60 - 60W/6,000 lms 603mm x 1212mm x 18mm	65 - 6500			0 - None

