

# SUBMARINER

Submersible Inground Luminaire



**Applications:** Swimming pools, ponds and water features, aquarium, aquatic centers, architectural and much more

## PERFORMANCE SUMMARY

Available in a variety of beam angles and capable of being submerged in depths of up to 5m, the Submariner LED is ideal for swimming pools, lakes, water features and aquatic architectural attractions.

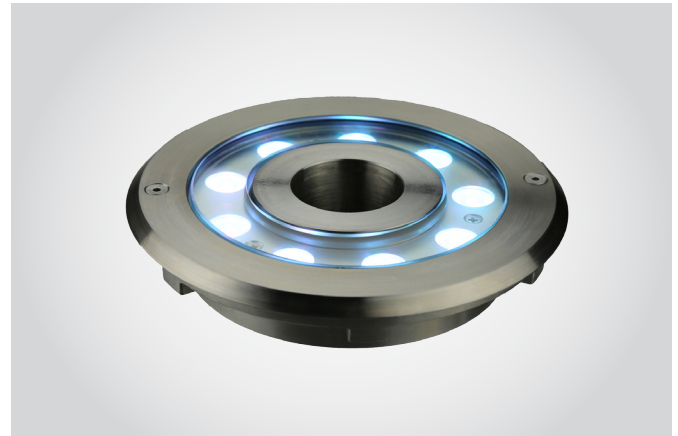
The Submariner Submersible LED Uplight is a robust, elegant luminaire offering IP68 high ingress protection for marine lighting applications

## Features

- Fully submersible to 5m depth
- Durable extruded die cast aluminium housing
- High impact protection rating tempered glass lens
- Elegant marine grade 316 stainless steel trim
- Available in numerous narrow and wide beam distributions for precise optical control
- 240V or 24V DC RGB colour changing option, with inbuilt driver interface to DMX decoding system

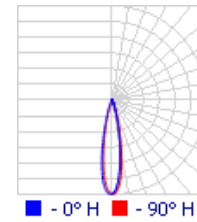
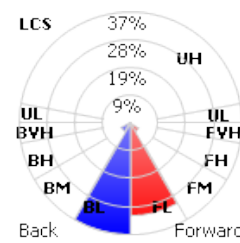
## Specification

Volts: AC100-277V or 24V DC  
 Average Rated Life: 100,000hrs  
 CRI: RA80/90  
 Environment Location: IP68  
 Submersible Depth: 5m  
 Ambient Temp: -20°C to 45°C  
 PF: > 0.95

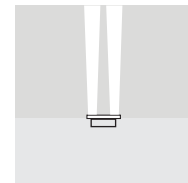
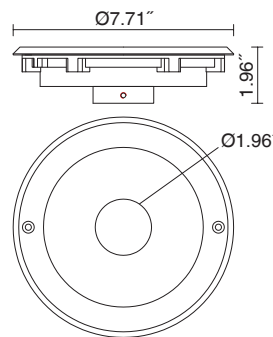


## PHOTOMETRICS

15° Optics



## DIMENSIONS



\*RGB/DMX Option available for 32W

## PRODUCT CODE

Example Submariner cat. C2025690RND

Model No	Wattage (W)	Beam Angle	Color Temperature (K)	Ra	Accessories
Submariner	C20 - 20W	05 - 5°	3 - 3000	80 - RA80	RND - Remote Non Dimmable Driver RDM - Remote Dimmable Driver DMX - DMX Decoder
		C32 - 32W	15 - 15°		
	25 - 25°	6 - 6000			
	45 - 45°	R - Red			
	60 - 60°	G - Green			
			B - Blue		
			RGB - RGB		

