

VENUS SMART

Single Basket LED Smart Troffer



Applications: Office buildings, education and healthcare, convenience stores, supermarkets and retail, civic and government

PERFORMANCE SUMMARY

The attractively-priced Venus is your best-in-value ambient lighting solution for office, retail, healthcare and other commercial projects.

The Venus is a center-basket troffer features a contemporary design and high-efficiency LED technology. The fixture's shallow depth allows for easy installation and multiple control options offer versatility for configuration—all backed by reliable performance.

Features

- Featuring Plug and Play Bluetooth Smart Technology (BST) direct wireless control
- Smart sensor control equipped with embedded daylighting and motion sensors for intuitive lighting control
- Reformative optics delivering comfortable low brightness distribution for a wider, smoother and more uniform light output
- Lumen packages ranging from 3,770 to 6,250 lumens
- Tunable CCT from warm(3500k) to daylight (4000k) to cool (5000k)
- Up to >145LPW with high efficiency output
- High-performance driver features over-voltage, under-voltage, short-circuit and over temperature protection
- 2.59" mount depth
- Emergency battery pack option

Specification

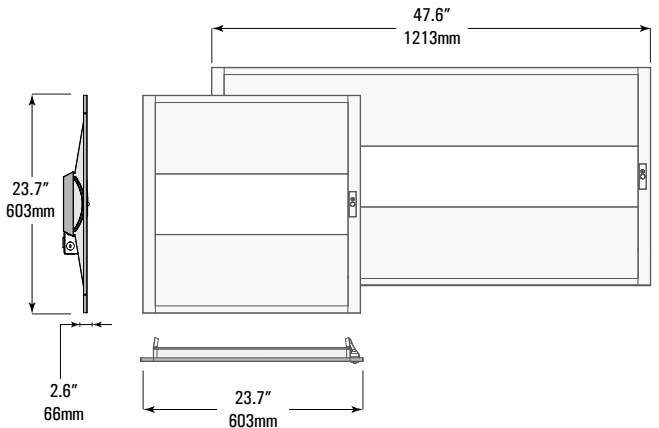
Volts: AC100-277V
 Average Rated Life: L80/60,000hrs
 CRI: RA80
 Beam Angle: 120°
 Ambient Temp: -4°F to 104°F
 Dimming: 0-10v
 THD: <20% PF: >0.9

PRODUCT CODE

Example Venus Smart cat. LP.2/2.26.345.SRS.BST



DIMENSIONS



Model No	Output	Dimension	Wattage (W)/ Lumens	CCT (°K)	Wall Switches ³	Options ¹
Venus Smart	LP Low Power 125lm/W	2/2 - 2x2ft 23.7" x 23.7" x 2.6"	30 - 30W/3,750lms	345 - CCT Changeable 3500/4000/5000	SRS(n) - Solar Remote Switches WS(n) - Smart Wireless Wallswitch 0 - None	E1 - 8W Emergency
		2/4 - 2x4ft 23.7" x 47.8" x 2.6"	50 - 50W/6,250lms			E2 - 15W Emergency
	HP High Power 145lm/W	2/2 - 2x2ft 23.7" x 23.7" x 2.6"	26 - 26W/3,770lms			BST ² - Bluetooth Smart Control
		2/4 - 2x4ft 23.7" x 47.8" x 2.6"	40 - 40W/5,800lms			0 - None

NOTES

¹EM and BST can be selected together

²BST includes smart sensor function that can be programmed with smart phone app or wall switches (at least one per job location)

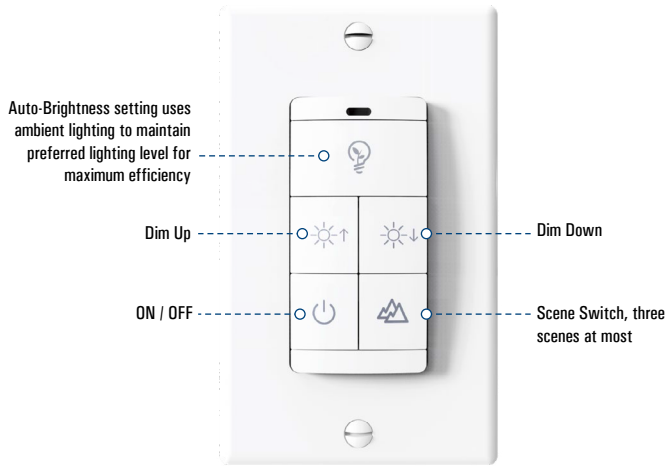
³Denotes 'n' quantity required



VENUS SMART

Single Basket LED Smart Troffer

WIRELESS LIGHTING CONTROL SYSTEM Bluetooth Switch



Smart Sensor



Features

- Occupancy sensor and daylight harvesting sensor
- Embedded Bluetooth communication module
- Supports 1-channel and 2-channel dimming
- Low profile and can be inserted into any luminaries
- Operated by Light Remote LED APP
- Can match with various antennas in different luminaries.
- Working temperature: -30~80°C (-22~176°F)

Wall Switches

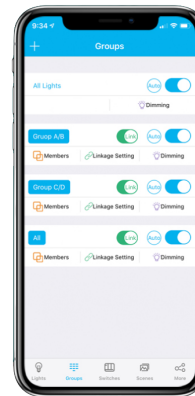
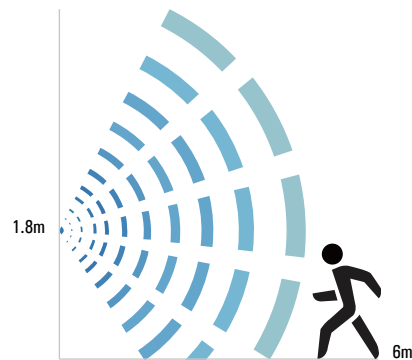
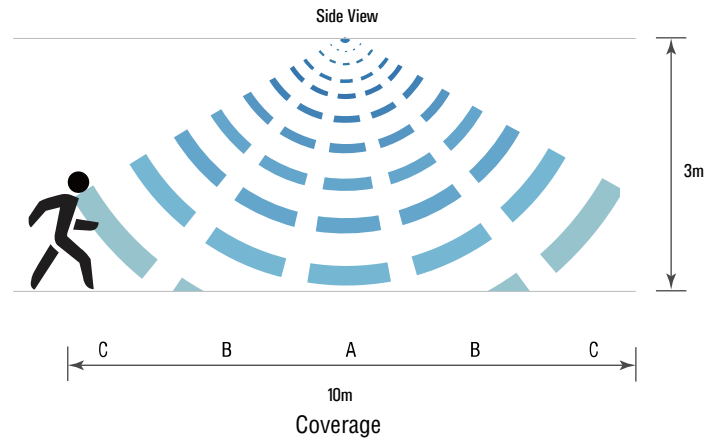


SRS
Solar Remote
Switch



WS
Smart Wireless
Wallswitch

Detection Area



App Control

- Instant scenes
- Auto brightness
- Auto calibration
- High end trim
- Group control
- Dimming
- Bypass mode

PHOTOMETRICS

