

# VENUS

Single Basket LED Troffer



**Applications:** Office buildings, education and healthcare, convenience stores, supermarkets and retail, civic and government

## PERFORMANCE SUMMARY

The attractively-priced Venus is your best-in-value ambient lighting solution for office, retail, healthcare and other commercial projects.

The Venus is a center-basket troffer features a contemporary design and high-efficiency LED technology. The fixture's shallow depth allows for easy installation and multiple adjustment options offer versatility for configuration—all backed by reliable performance.

## Features

- High reflectance optical engine delivers main beam focus through the optically designed acrylic lens.
- Ribbed acrylic lens overlay manages balance of efficiency and aesthetics.
- Reformative optics delivering comfortable low brightness distribution for a wider, smoother and more uniform light output
- Long-life LEDs that maintain 70% of their lumen output at 60,000hours (L80/60,000hrs)
- Lumen packages ranging from 3,250 to 6,500 lumens
- Tunable CCT from warm(3000k) to daylight (4000k) to cool (5000k)
- 1.8" mount depth
- At side space saving driver design

## Electrical

- Up to >130LPW with high efficiency output
- High-performance driver features over-voltage, under-voltage, short-circuit and over temperature protection
- Dimming (0-10V) and Architectural Narrow lens are standard.
- Emergency battery pack option
- 3-way fully adjustable power selection switch
- At side space saving driver design

## Specification

Volts: AC110-277V  
 Average Rated Life: L70/60,000hrs  
 CRI: RA80  
 Beam Angle: 110°  
 Ambient Temp: -4°F to 105°F  
 Dimming: 0-10v  
 THD: <20% PF: >0.95

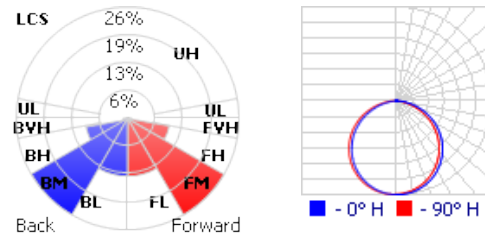
## PRODUCT CODE

Example Venus cat. 2/2.35.345.MS.0

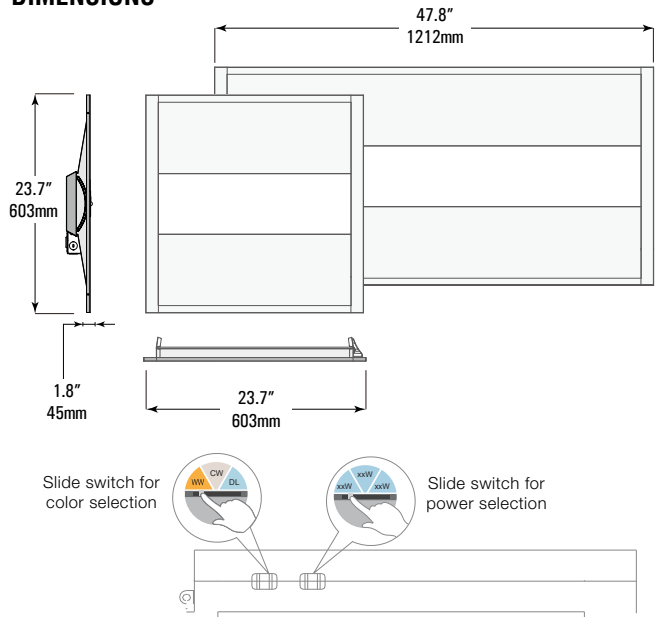
Model No	Dimension	Wattage (W)/ Lumens	CCT (°K)	Control	Emergency
Venus	2/2 - 2x2ft 23.7" x 23.7" x 1.8"	35 - 25/35W 3250/4550Lm	345 - CCT Changeable 3500/4000/5000	MS - Microwave Sensor	E1 - 8W Emergency
	2/4 - 2x4ft 23.7" x 47.8" x 1.8"	50 - 33/40/50W 4290/5200/6500Lm		0 - None	E2 - 15W Emergency 0 - None



## PHOTOMETRICS



## DIMENSIONS

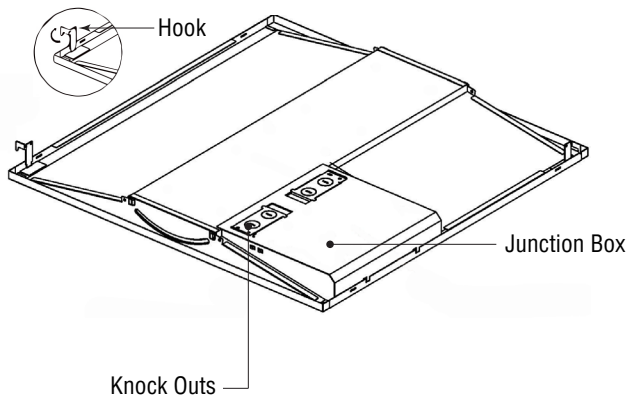


# VENUS

Single Basket LED Troffer

## INSTALLATION INSTRUCTIONS

- (1) Turn off power to the fixture at circuit breaker before installation.
- (2) Remove existing lamps, door frame (if applicable), reflector and ballast cover. Depending on clearance space, ballast may need to be removed.
- (3) Connect the black/brown lead to line (+) supply lead. Connect the white/blue lead to neutral common (-) supply lead.
- (4) Connect the green lead to ground supply lead.
- (5) If any, connect purple/blue to 0-10V signal supply lead and grey/white to 0-10V neutral reference supply lead.
- (6) Bend the end of the hook to the right 90 degrees and attach housing onto the t-bar for a secure installation



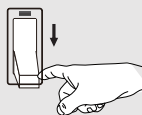
### WARNING

Risk of fire or electric shock. Luminaire wiring and electrical parts may be damaged when drilling during installation of LED troffer. Check for enclosed wiring and components

### WARNING

Risk of fire or electric shock. LED troffer installation requires knowledge of luminaire electrical systems. If not qualified, do not attempt installation. Always contact a qualified electrician

### WARNING



RISK OF FIRE, ELECTRIC SHOCK OR PERSONAL INJURY

Before installation, turn power off