

# GPACK

Architectural Wall Light



**Applications:** Building perimeters, residential courtyards, exterior security, building facades, pathway and perimeter lighting

## PERFORMANCE SUMMARY

The GPack Series was designed to provide optimal wall-mounted solutions for both entryway and building perimeter lighting. Using type III asymmetric distributions and a range of outputs these luminaires provide visually comfortable lighting at all mounting heights

With clean lines, the GPack blends seamlessly into any architecture, meeting the everyday lighting needs of engineers and architects alike.

## Features

- Includes standard photo cell for dusk to dawn operation
- Durable die cast aluminium construction
- High performance Nichia LEDs
- Quick fit installation using a high strength rotatable shaft and 4 screws
- Low profile lightweight streamlined architectural design
- Exceptional operating efficiency of 125lm/W
- Type III bat wing optics suitable for building perimeters and entryways
- Fully gasketed polycarbonate lens provides even light distribution and protects electronics
- Dark sky friendly with minimal uplight of less than 5% total lumen output illuminating above 900

## Specification

Volts: AC100-277V

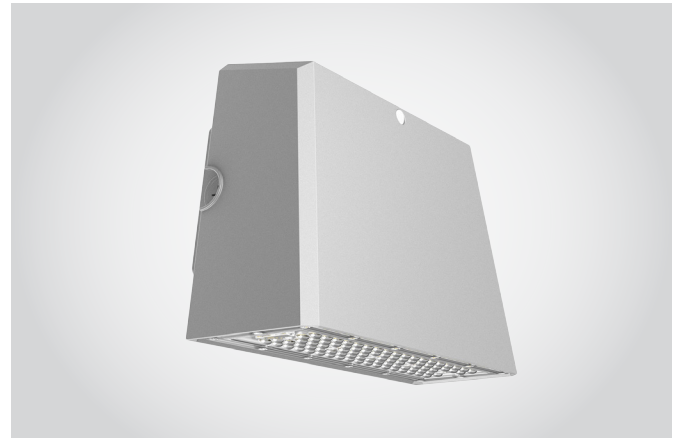
Surge Protection: 1kV line-line, 2kV line earth

Average Rated Life: 50,000hrs

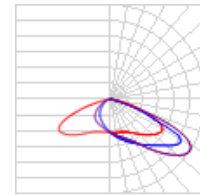
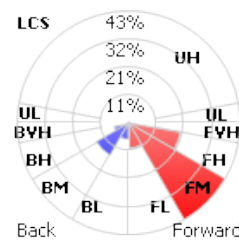
Environment Location: IP66

Ambient temp: -22°F to 113°F

PF: > 0.9

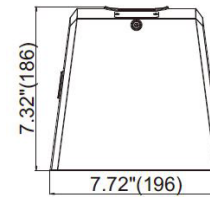
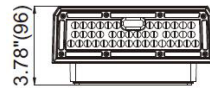


## PHOTOMETRICS

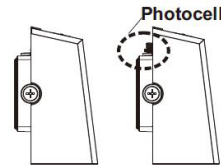
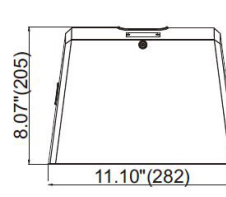
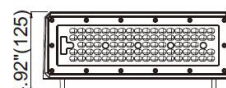


## DIMENSIONS

12/25/30W



40/70W



## PRODUCT CODE

Example GPack cat. 12DS4DS

Model No	Wattage (W)	Colour	Color Temperature (°K)	Options
GPack	12 - 12W/1,500 lms	DB - Dark Bronze	4 - 4000	0 - None
	25 - 25W/3,125 lms	SG - Silver Gray	5 - 5000	DS - Daylight Sensor
	30 - 30W/3,750 lms			
	40 - 40W/5,000 lms			
	70 - 70W/8,750 lms			

