

LOPACK

LED Wall Pack Light



Applications: Building perimeters, residential courtyards, building exteriors, retail and grocery and more

PERFORMANCE SUMMARY

Designed to be a low power area light, the LoPack Series LED is modern streamlined wall pack that delivers incredible efficiency, without sacrificing application performance.

The LoPack Series offers a premier site lighting solution that incorporates exceptional thermal management with high-quality components and a patented streamlined profile

Features

- Durable die cast aluminium construction
- High performance Japanese Nichia LED chips
- Quick fit installation using a high strength rotatable shaft and 2 screws
- Streamlined design prevents accumulation of dust and debris while serving as a heatsink
- Exceptional operating efficiency of 130lm/W

Specification

Volts: AC100-277V

Surge: 4kV line-line, 6kV line earth

Dimensions: 11.65" x 8.8" x 4.96"

Average Rated Life: 90,000hrs

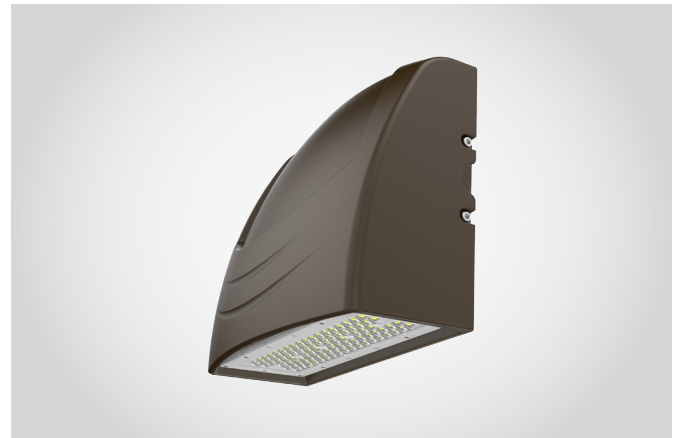
Beam Angle: 110°

Environment Location: IP65

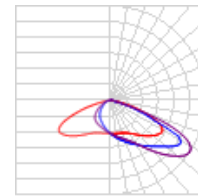
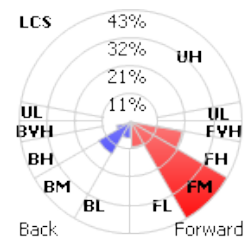
CRI: RA80

Benefits

- Replaces existing wall packs simply and easily
- High quality, even illumination that is virtually maintenance free
- Up to 65% energy savings
- Standard 5-year limited warranty
- Can be combined with the Eagle Eye series Area light for a complete site lighting solution



PHOTOMETRICS



■ - 0° H ■ - 90° H
■ - Max Cd: 50° H

PRODUCT CODE

Example LoPack cat. 40DB4110

Model No	Wattage (W)	Colour	Color Temperature (°K)	Beam Angle
LoPack	40 - 5,200 lms 70 - 9,100 lms	DB - Dark Bronze	3 - 3000	110 - 110°
			4 - 4000	
			5 - 5000	

