

REFINO HP

High Output Linear Highbay



Applications: Retail and grocery, shopping malls, supermarkets, exhibition centers, factories, industrial and warehouse

PERFORMANCE SUMMARY

The sleek and low profile Refino HP Series provides design flexibility for a multitude of applications, without sacrificing the power and robustness needed in industrial and high output commercial applications.

Visually comfortable PC lens option give the Refino a uniform, smooth and evenly illuminated coverage, providing a more architectural look, well suited for commercial and retail applications

Construction

- Refined architectural appearance and robust construction suitable for both commercial and industrial applications
- Weathertight IP66 driver compartments and performance heat sinks
- Heavy duty die cast thick gauge IK10 rated aluminium alloy construction
- Separate optical and electrical compartments deliver improved thermal management and increased operational life.
- Ceiling and 60° swivel bracket or suspended installation
- Custom PC lens attachment for increased glare control

Optics

- High energy savings with 155Lm/W operating efficiency
- Equipped with integral motion sensors and photocell control
- Selection of 4 different distributions from 30x90° narrow beam aisle lighting to 60x120° wide beam for large area applications
- Ceiling and 60° swivel bracket or suspended installation
- On board field selectable power control
- 7 different lumen packages, ranging from 15,500 to 74,400lms

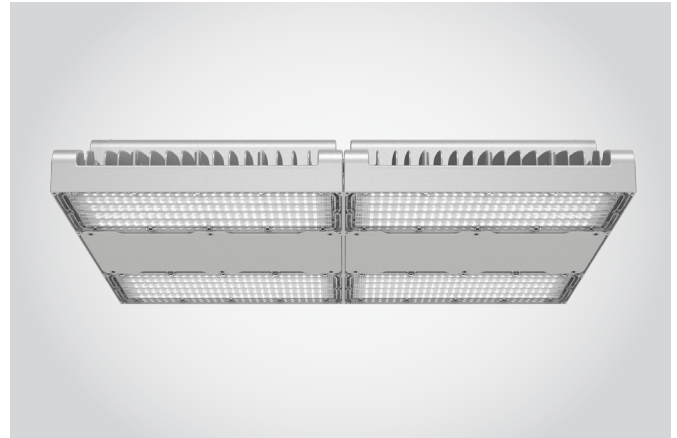
Specification

Volts: AC100-277V
 Body Color: Silver Gray
 Average Rated Life: 82,000hrs @ L80
 Environment/Impact Rating: IP66/IK10
 Surge: 6kV line-line, 10kV line earth
 Operating Temp: -22°F to 122°F
 CRI: RA80

PRODUCT CODE

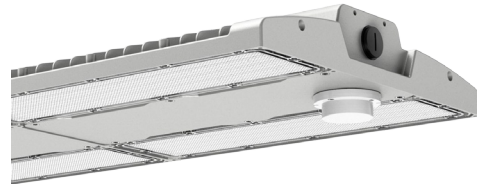
Example Refino HP cat. 100.3.60.SL.PE.EM

Model No	Wattage (W)	CCT (°K)	Distribution	Mounting	Control	Accessories
Refino HP	100 - 100W/15,500 lms	3 - 3000	60 - 60°	SL - Fixed Ceiling	PE - Photocell	EM - 8W/90min Emergency Backup
	150 - 150W/23,500 lms	4 - 4000	90 - 90°	RP - 60° Adjustable Bracket	DIM - 0-10v Dimming	PC - Glare Free PC Lens
	200 - 200W/31,000 lms	5 - 5000	39 - 30x90°	SP - Suspension Mount	ZB - Zigbee	FS - Field Selectable Power Control
	240 - 240W/37,200 lms		612 - 60x120°		DLI - Dali	L7 - L715P
	300 - 300W/46,500 lms				MW- Microwave Sensor	15A/277V Industrial Plug w 6ft cord
	400 - 400W/62,000 lms				PIR - PIR Motion Sensor	
	480 - 480W/74,400 lms				0 - None	



CONTROL

Motion Sensor



PIR Motion Sensor



Photocell

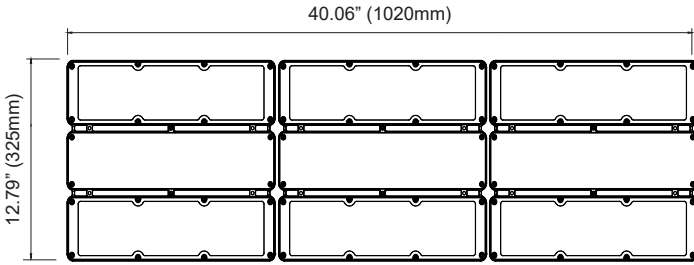


REFINO HP

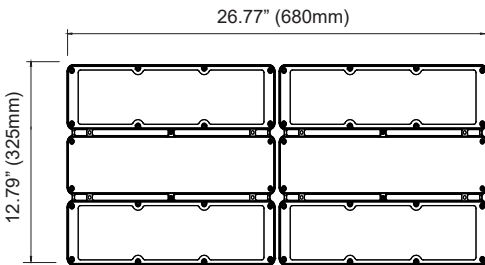
High Output Linear Highbay

DIMENSIONS

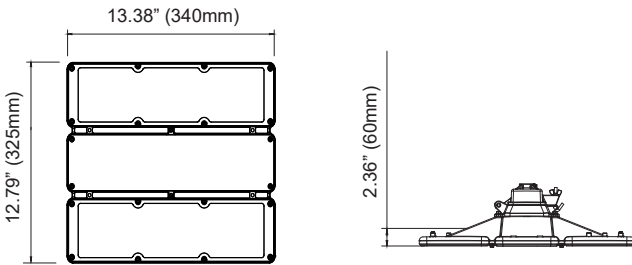
400-480W



200-300W

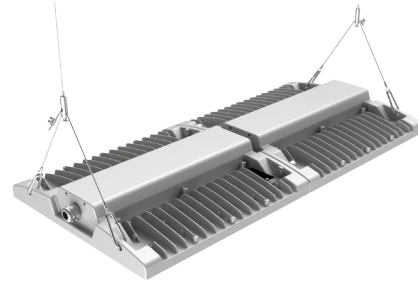


100-150W

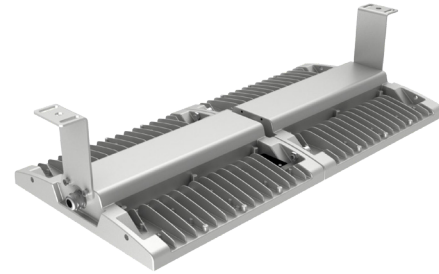


INSTALLATION

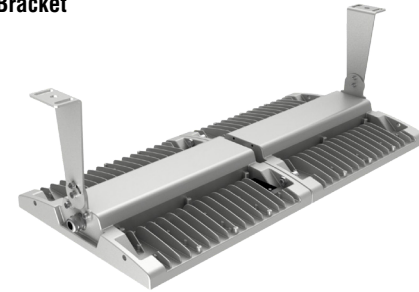
Suspended



Fixed Bracket

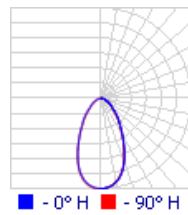
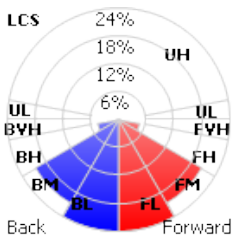


60° Adjustable Bracket

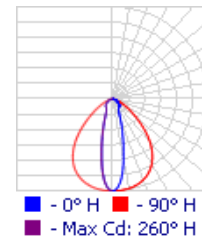
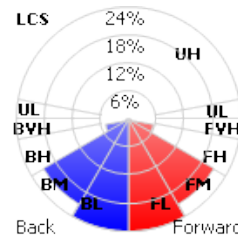


PHOTOMETRICS

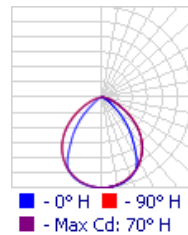
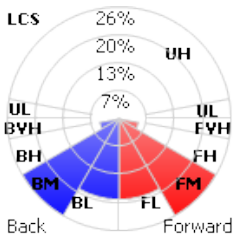
60°



30x90°



90°



60x120°

