

SLATE LED

Full Cutoff Wallpack



Applications: Building perimeter areas, petrol stations, retail and grocery, residential, industrial and warehouse

PERFORMANCE SUMMARY

Whether you are trying to meet specification, code, or seeking a building mount solution with the right options, the Slate LED was designed to provide optimal wall-mounted lighting solutions for all mounting heights.

With clean lines, it blends seamlessly into any architecture, meeting the everyday lighting needs of engineers and architects alike. The Slate comes in 3 different optics and 1,980 to 9,000 lumens packages with optional photocell control

Features

- Exceptional operating efficiency of up to 150lm/W
- High output Philips LumiLED COB
- Die cast thick gauge fire proof aluminium alloy construction
- Surface finished with a proprietary powercoat, withstanding harsh industrial conditions without cracking or peeling
- High output polycarbonate lens providing superior light output
- Long life aluminium LED circuit board with added corrosion resistance ideal for installation in seaside areas
- Delivered lighting output up to 9,000 median lumens
- Cold weather -40°F operating temperature
- Embedded photocell option

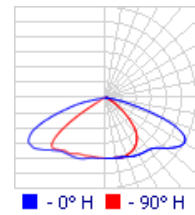
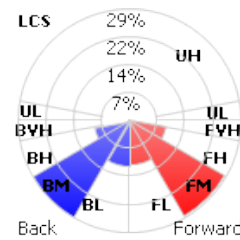
Specification

Volts: AC100-277V
 Average Rated Life: 60,000hrs
 Impact Rating: IK08
 CRI: > RA70, PF: > 0.95
 Environment Location: IP66
 Ambient Temp: -40°F to 122°F



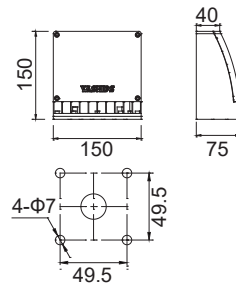
PHOTOMETRICS

Type 2 (T2)

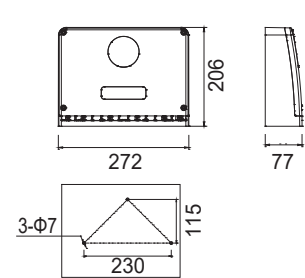


DIMENSIONS

18/25W



50/60W



PRODUCT CODE

Example Slate cat. 18T2G3PE

Model No	Wattage	Distribution	Color	CCT (°K)	Options
Slate	18 - 18W/1,980lms	T2 - Type 2	G - Gray RAL7016	3 - 3000	PE - Photocell
	25 - 25W/2,750lms	T3 - Type 3	B - Black RAL9005	4 - 4000	0 - None
	50 - 50W/6,500lms	T3 - Type 3		5 - 5000	
	60 - 60W/9,000lms	T4 - Type 4		57 - 5700	

