

SLEET

Full Cutoff Wallpack



Applications: Commercial buildings, apartments, administrative, hotels, public areas, schools, hospitals

PERFORMANCE SUMMARY

The Sleet Series of wall packs are a full cutoff architectural wall mounted fixture ideal for commercial offices, schools and other public administrative buildings. It offers a wide range of outputs and options including CCT select ability between 3000K, 4000K and 5000K

With a contemporary slim line design the Sleet Series portfolio delivers outstanding value and feature a range of energy efficient, easy to install, highly reliable fixtures backed by a 6-year limited warranty and product support.

Construction

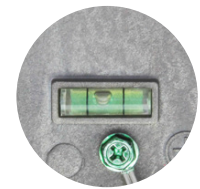
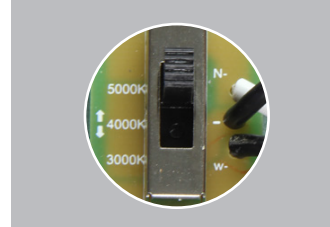
- Contemporary styling compliments a wide range of outdoor settings
- High impact die cast polyester aluminum body with UV resistant finish
- DLC Premium 5.1 qualified product
- Built in level to ensure straight mounting every time
- Easy installation with threaded conduit holes on sides and back of fixture

Optics

- Tunable CCT switch from warm white (3000k) to daylight (4000k) to cool white (5000k)
- Lumen packages ranging from 3,654 to 12,746 lumens
- Type 4 general distribution delivers exceptional side and front coverage with minimal backlight

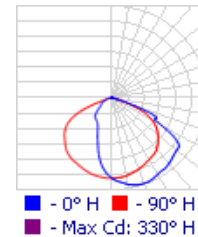
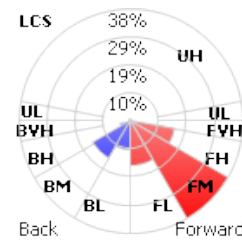
Electrical

- Wide range input voltage AC120-277/347-480V (0-10V/10% Dimmable)
- Optional swivel photocell sensor
- Equipped with embedded daylighting and motion sensor control
- Normal or cold weather emergency battery backup option
- High-performance driver features dim-to-off functionality and a 12-24V auxiliary output, allowing easy and rapid controls integration



PHOTOMETRICS

Type 4



PRODUCT CODE

Example Sleet cat. 120.28.345.T4.MS.CB + RC(2)

Model No	Voltage	Wattage (W)	CCT (°K)	Distribution	Control ¹	Emergency ¹
Sleet	120 - 120-277V	28 - 28W/3,654 lms	345 - CCT Changeable	T4 - Type 4	MS ² - PIR Daylight/Motion Sensor	BB - Battery Backup Min 0°C, 120-277V
	347 - 347-480V	40 - 40W/5,225 lms	3000/4000/5000		SC - 120-277V Swivel Photocell	CB - Cold Weather Battery Backup Min 20°C, 120-277V
		70 - 70W/8,872 lms			BC - Button Photocell	0 - None
		100 - 100W/12,746 lms			+RC(n) ³ - SL-100 IR Remote	

NOTES:-

¹CB/BB and MS can be selected together

²MS includes BC function, internal for 120-277V, external for 347-480V, requires SL-100 remote control to program (at least one per job location)

³Quantity required 'n'



SLEET

Full Cutoff Wallpack

SPECIFICATION

ITEM	DETAILS
Input Voltage	120-277V Standard; 347-480V Available
CRI	>80
Average Rated Life	130,000hrs
Environment Location	IP65
Impact Rating	IK08
Operating Temperature	-40°F-104°F (-40°C-40°C)
Humidity	10-90% RH, Non-Condensing
Surge Protection	6kV
Efficiency	130lm/W
Emergency	90min
Dimming	0-10V/10% Dimmable

OPTIONS



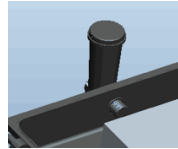
MS
PIR Daylight
Motion Sensor



+RC
SL-100
IR Remote



BC
Button
Photocell



SC
120-277V
Swivel Photocell

DIMENSIONS

