

# VENUS SMART

Single Basket LED Smart Troffer



**Applications:** Office buildings, education and healthcare, convenience stores, supermarkets and retail, civic and government

## PERFORMANCE SUMMARY

The attractively-priced Venus is your best-in-value ambient lighting solution for office, retail, healthcare and other commercial projects.

The Venus is a center-basket troffer features a contemporary design and high-efficiency LED technology. The fixture's shallow depth allows for easy installation and multiple control options offer versatility for configuration—all backed by reliable performance.

## Features

- Featuring Plug and Play Bluetooth Smart Technology (BST) direct wireless control
- Smart sensor control equipped with embedded daylighting and motion sensors for intuitive lighting control
- Reformative optics delivering comfortable low brightness distribution for a wider, smoother and more uniform light output
- Lumen packages ranging from 3,770 to 6,250 lumens
- Tunable CCT from warm(3500k) to daylight (4000k) to cool (5000k)
- Up to >145LPW with high efficiency output
- High-performance driver features over-voltage, under-voltage, short-circuit and over temperature protection
- 2.59" mount depth
- Emergency battery pack option

## Specification

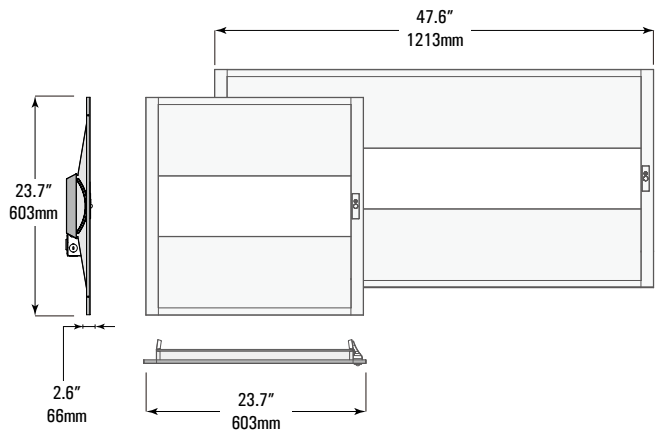
Volts: AC100-277V  
 Average Rated Life: L80/60,000hrs  
 CRI: RA80  
 Beam Angle: 120°  
 Ambient Temp: -4°F to 104°F  
 Dimming: 0-10v  
 THD: <20% PF: >0.9

## PRODUCT CODE

Example Venus Smart cat. LP.2/2.26.345.SRS.BST



## DIMENSIONS



Model No	Output	Dimension	Wattage (W)/ Lumens	CCT (°K)	Wall Switches <sup>3</sup>	Options <sup>1</sup>
Venus Smart	LP Low Power 125lm/W	2/2 - 2x2ft 23.7" x 23.7" x 2.6"	30 - 30W/3,750lms	345 - CCT Changeable 3500/4000/5000	SRS(n) - Solar Remote Switches  WS(n) - Smart Wireless Wallswitch  0 - None	E1 - 8W Emergency
		2/4 - 2x4ft 23.7" x 47.8" x 2.6"	50 - 50W/6,250lms			E2 - 15W Emergency
	HP High Power 145lm/W	2/2 - 2x2ft 23.7" x 23.7" x 2.6"	26 - 26W/3,770lms			BST <sup>2</sup> - Bluetooth Smart Control
		2/4 - 2x4ft 23.7" x 47.8" x 2.6"	40 - 40W/5,800lms			0 - None

## NOTES

<sup>1</sup>EM and BST can be selected together

<sup>2</sup>BST includes smart sensor function that can be programmed with smart phone app or wall switches (at least one per job location)

<sup>3</sup>Denotes 'n' quantity required

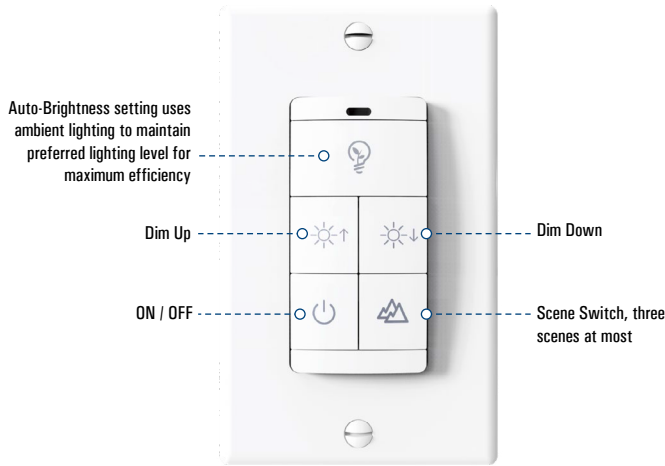
\*Consult factory for DLC options



# VENUS SMART

Single Basket LED Smart Troffer

## WIRELESS LIGHTING CONTROL SYSTEM Bluetooth Switch



## Smart Sensor



## Features

- Occupancy sensor and daylight harvesting sensor
- Embedded Bluetooth communication module
- Supports 1-channel and 2-channel dimming
- Low profile and can be inserted into any luminaries
- Operated by Light Remote LED APP
- Can match with various antennas in different luminaries.
- Working temperature: -30~80°C (-22~176°F)

## Wall Switches

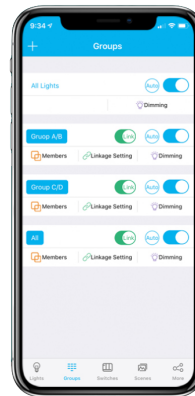
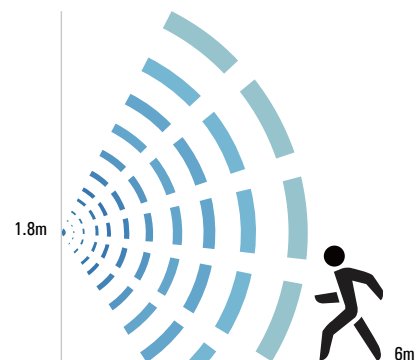
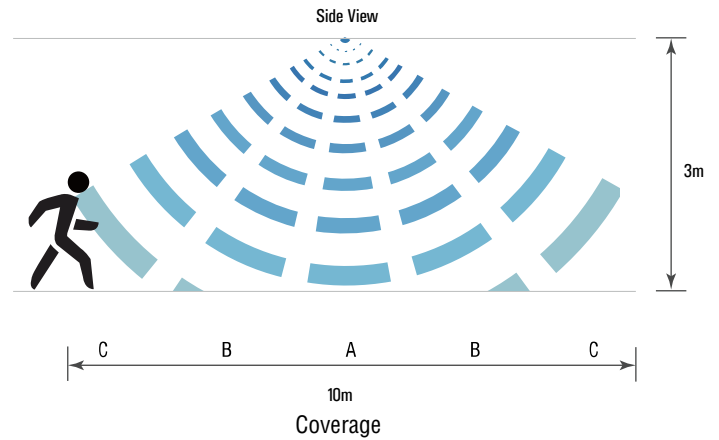


**SRS**  
Solar Remote  
Switch



**WS**  
Smart Wireless  
Wallswitch

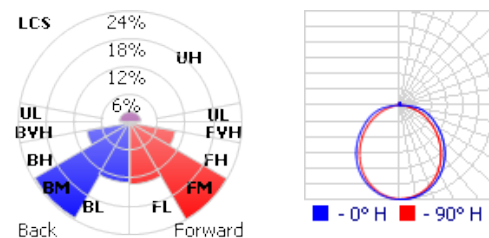
## Detection Area



## App Control

- Instant scenes
- Auto brightness
- Auto calibration
- High end trim
- Group control
- Dimming
- Bypass mode

## PHOTOMETRICS



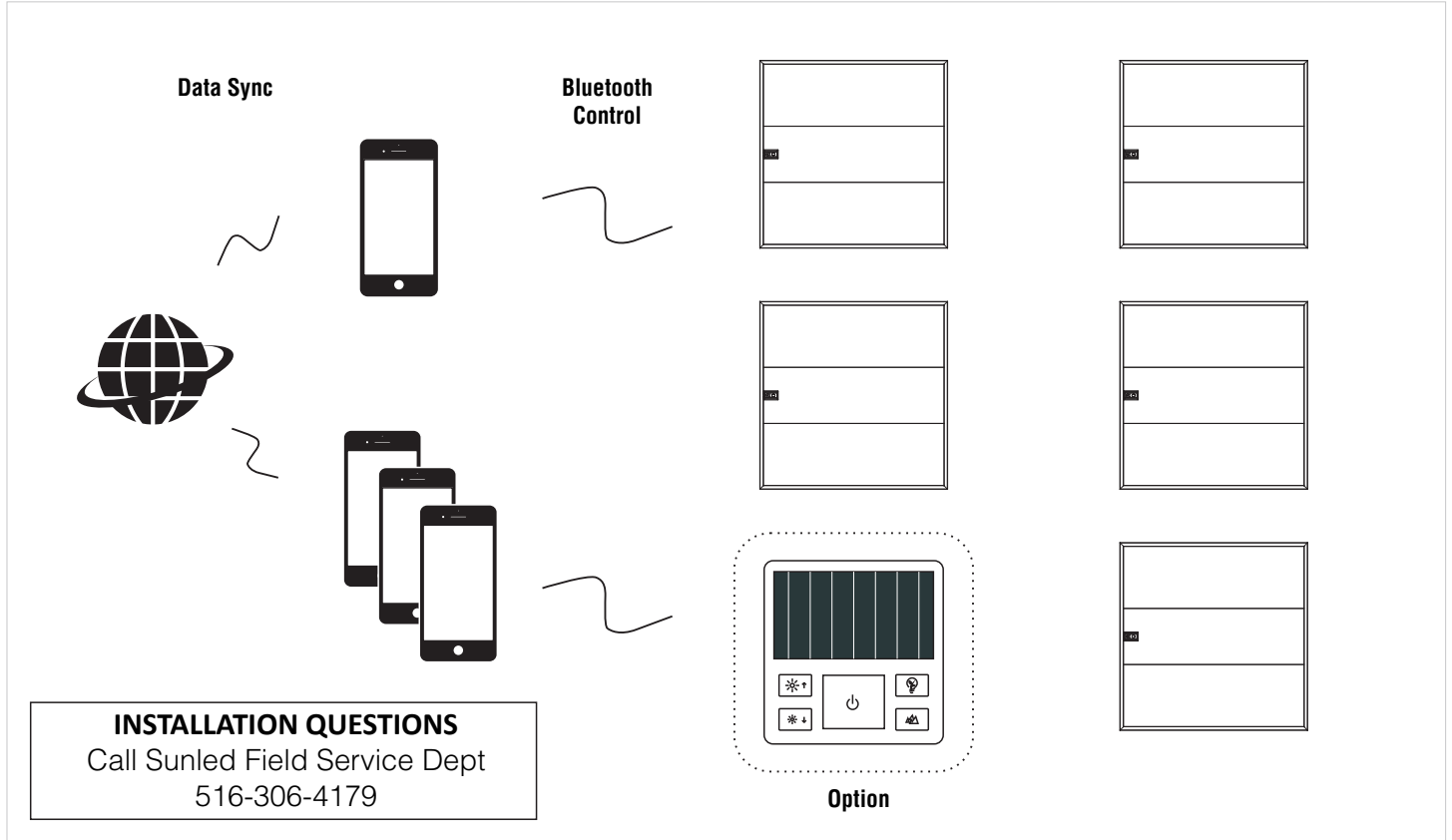
# VENUS SMART

Single Basket LED Smart Troffer

## INSTALLATION INSTRUCTIONS

The smart lighting system used in the Venus LED troffer Series is based on Bluetooth. Specialised device app's are designed to customise, set and operate the fixtures. As dimming can be achieved wirelessly through app control, 0-10V dimming wires can remain unused and do not need to be connected, unless smart control is bypassed. This is achieved by disconnecting the white control cord inside the the driver compartment and connecting the purple and gray 0-10V dimming cables, automatically activating normal dimming mode

### Operating Principle



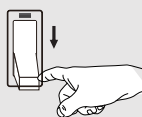
### ! WARNING

Risk of fire or electric shock. Luminaire wiring and electrical parts may be damaged when drilling during installation of LED troffer. Check for enclosed wiring and components

### ! WARNING

Risk of fire or electric shock. LED troffer installation requires knowledge of luminaire electrical systems. If not qualified, do not attempt installation. Always contact a qualified electrician

### ! WARNING



RISK OF FIRE, ELECTRIC SHOCK OR PERSONAL INJURY

Before installation, turn power off

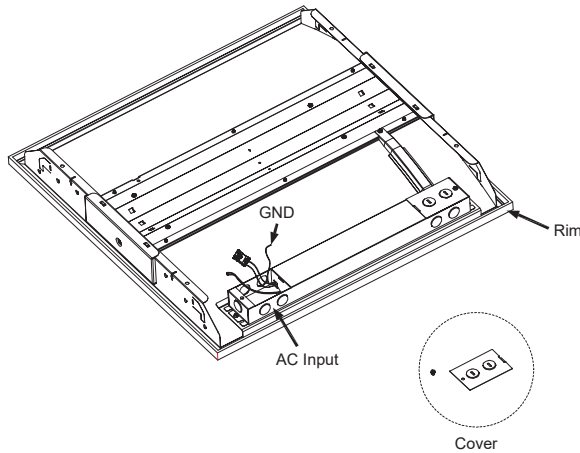


# VENUS SMART

Single Basket LED Smart Troffer

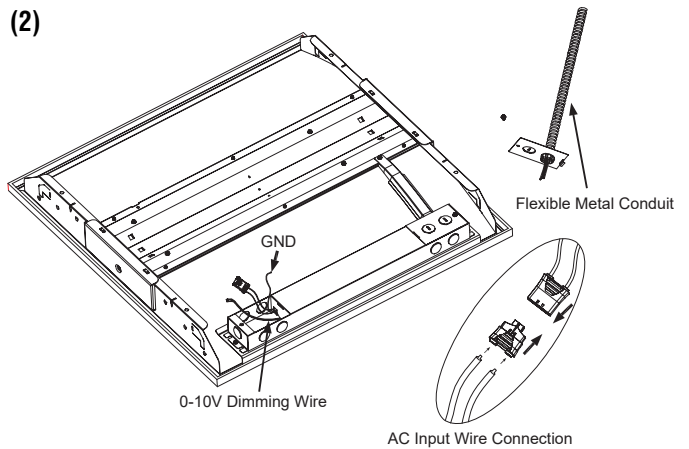
## Fixture Installation

(1)



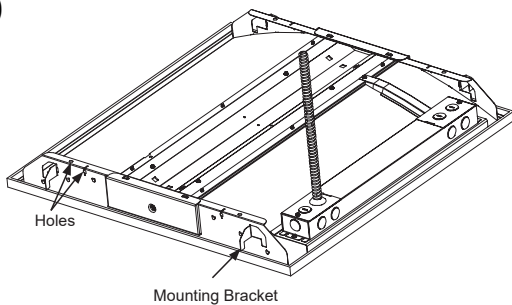
Remove the AC input end cover with from the driver compartment with tools. Place the troffer inside the ceiling

(2)



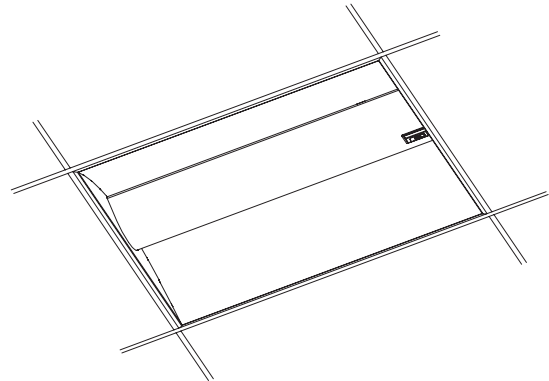
Push through the top cable entry points on the driver compartment with a tool and insert a flexible metal conduit through the hole as shown. Side cable entry points can also be used if desired. Connect the L, N, and GND wires. If needed, connect the dimming wires (purple wire "+" grey wire "-")

(3)



Reattach the driver cover. Fix the troffer to the ceiling structure by anchoring a safety cable to holes on the side of the troffer, fixed to ceiling structure. Pull out 90° mounting bracket and position fixture in place

(4)



The recessed troffer installation is finished.

## App Configuration

- 1 Download and install the IOS or Android App "Light Remote LED" on smart phone or device
- 2 Power and turn on all the fixtures. Start the App, turn on Bluetooth and search for the fixtures
- 3 The found fixtures will be shown in "Added" list. Check power connection and turn on fixtures that are not found and search again
- 4 Once all fixtures are added functions such as Groups, Scenes, Switching, Schedules can be programmed

## FAQ

### Fixture is not found

Make sure the fixture is powered and turned on and smart device bluetooth is working. Search again; If fixture still not found, completely shut down the app on the smart device and restart. Turn the fixture off and on and search again. Repeat if necessary

### Bluetooth wall switch is not found or cannot be added

Ensure switches are searched within 30 seconds of starting the app. Touch and hold the button a few times until is found

### User settings do not synchronise on all smart devices

Network connection is needed to synchronize data. Make sure wireless, WIFI or internet connection is secure and connected

